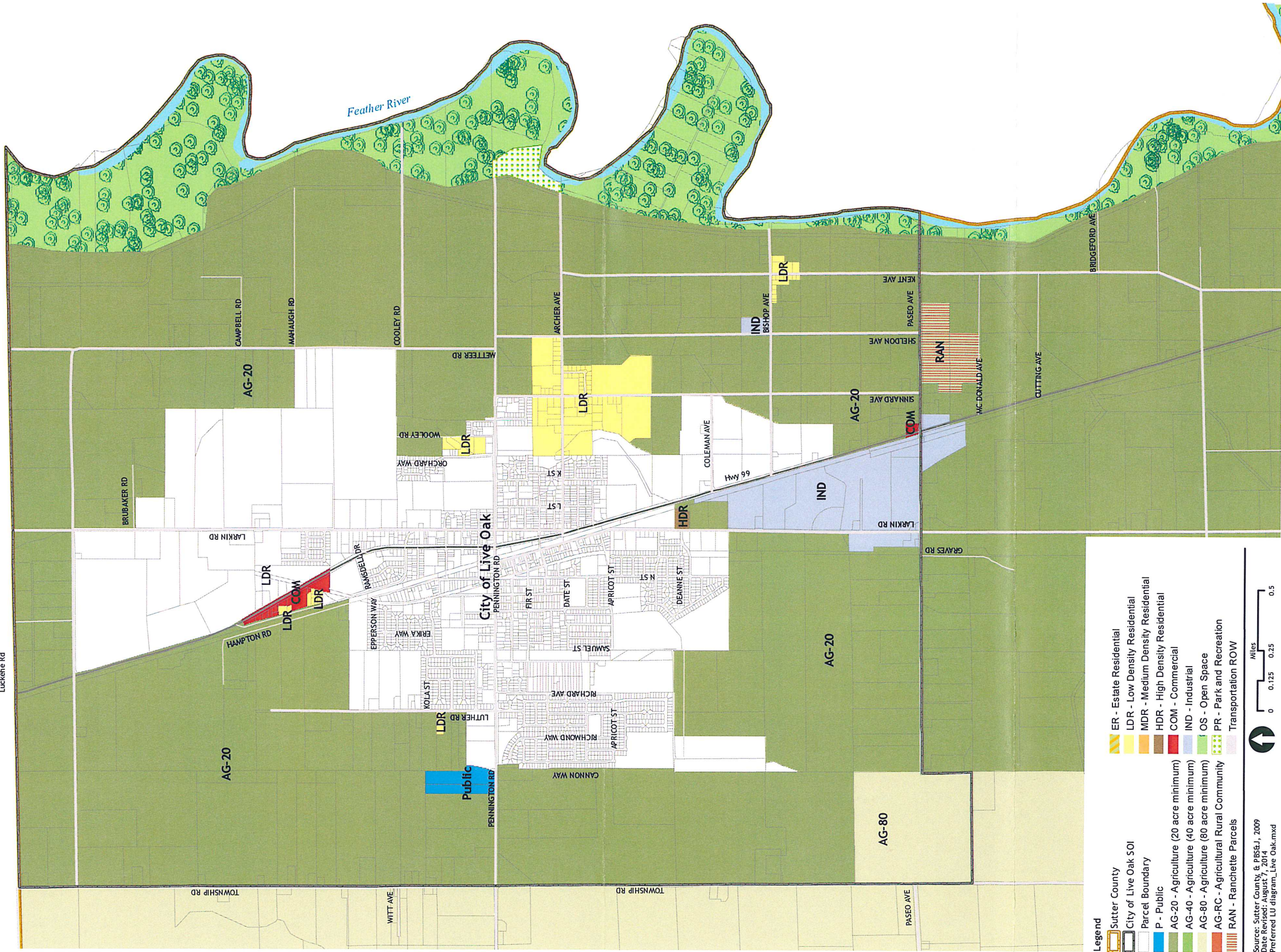


Butte County

Luckie Rd



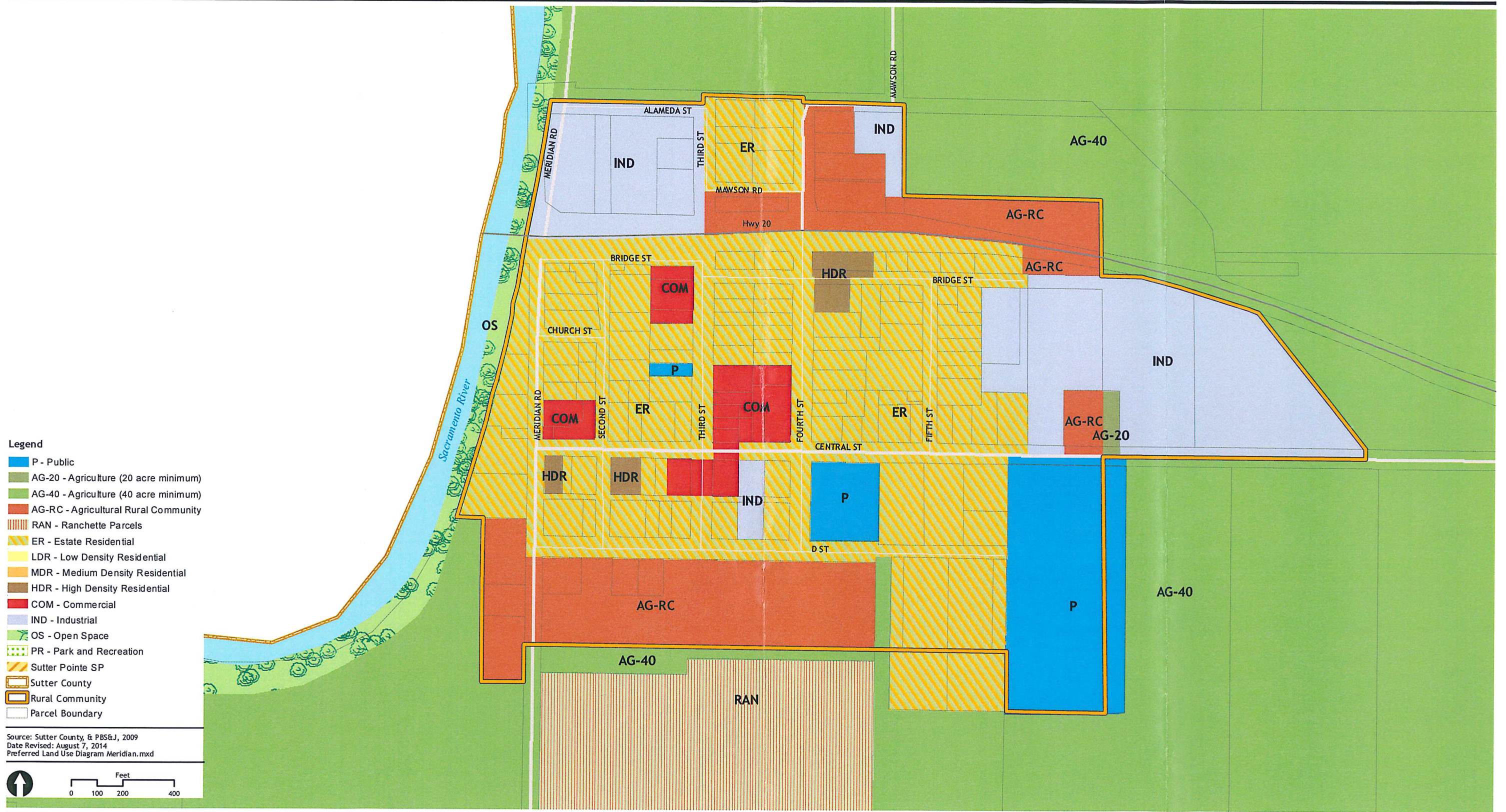
Legend

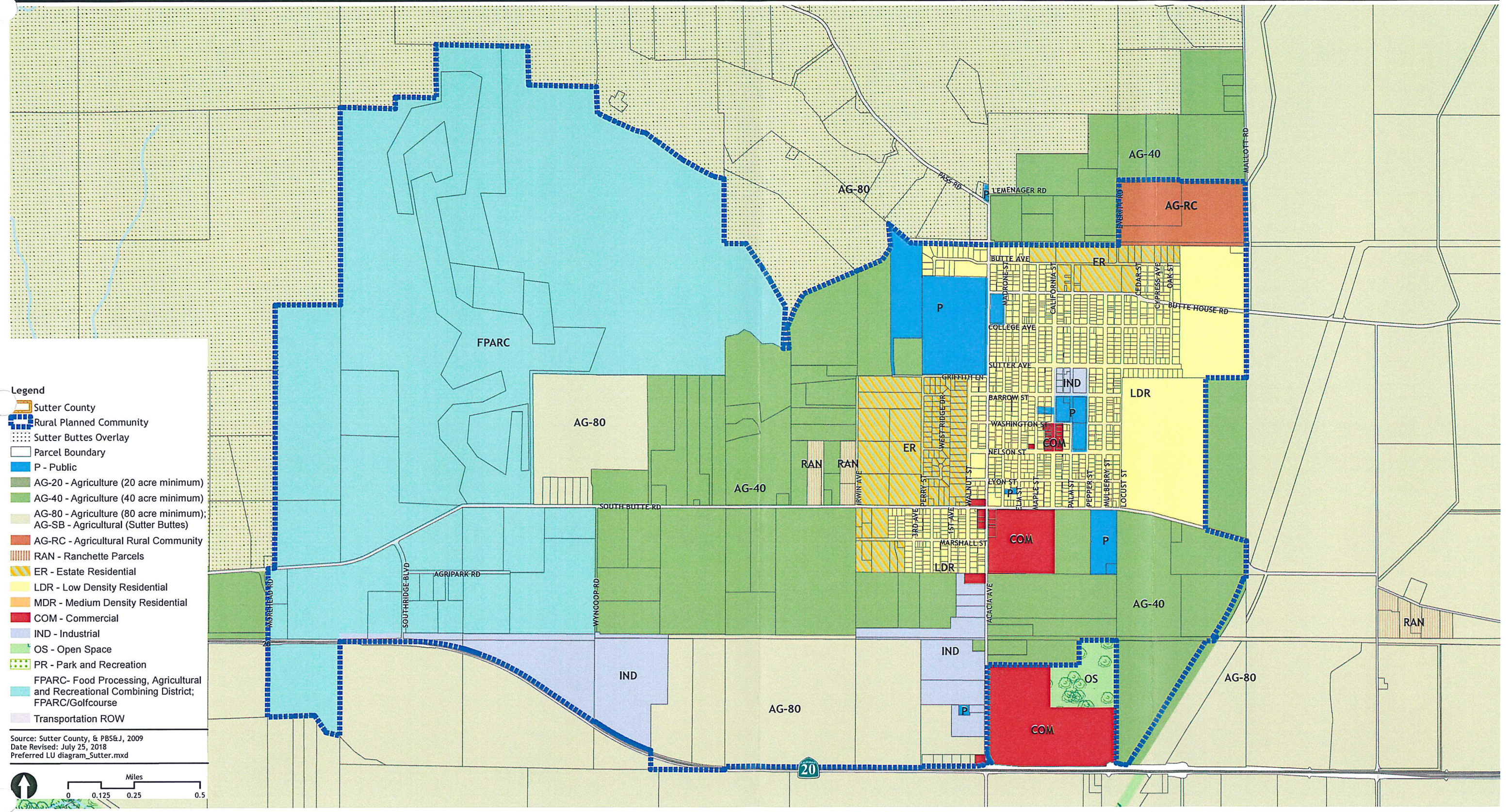
- Sutter County
- City of Live Oak SOI
- Parcel Boundary
- P - Public
- AG-20 - Agriculture (20 acre minimum)
- AG-40 - Agriculture (40 acre minimum)
- AG-80 - Agriculture (80 acre minimum)
- AG-RC - Agricultural Rural Community
- RAN - Ranchette Parcels
- ER - Estate Residential
- LDR - Low Density Residential
- MDR - Medium Density Residential
- HDR - High Density Residential
- COM - Commercial
- IND - Industrial
- OS - Open Space
- PR - Park and Recreation
- Transportation ROW

Source: Sutter County & PBS&J, 2009
Date Revised: August 7, 2014
Preferred LU diagram_Live Oak.mxd

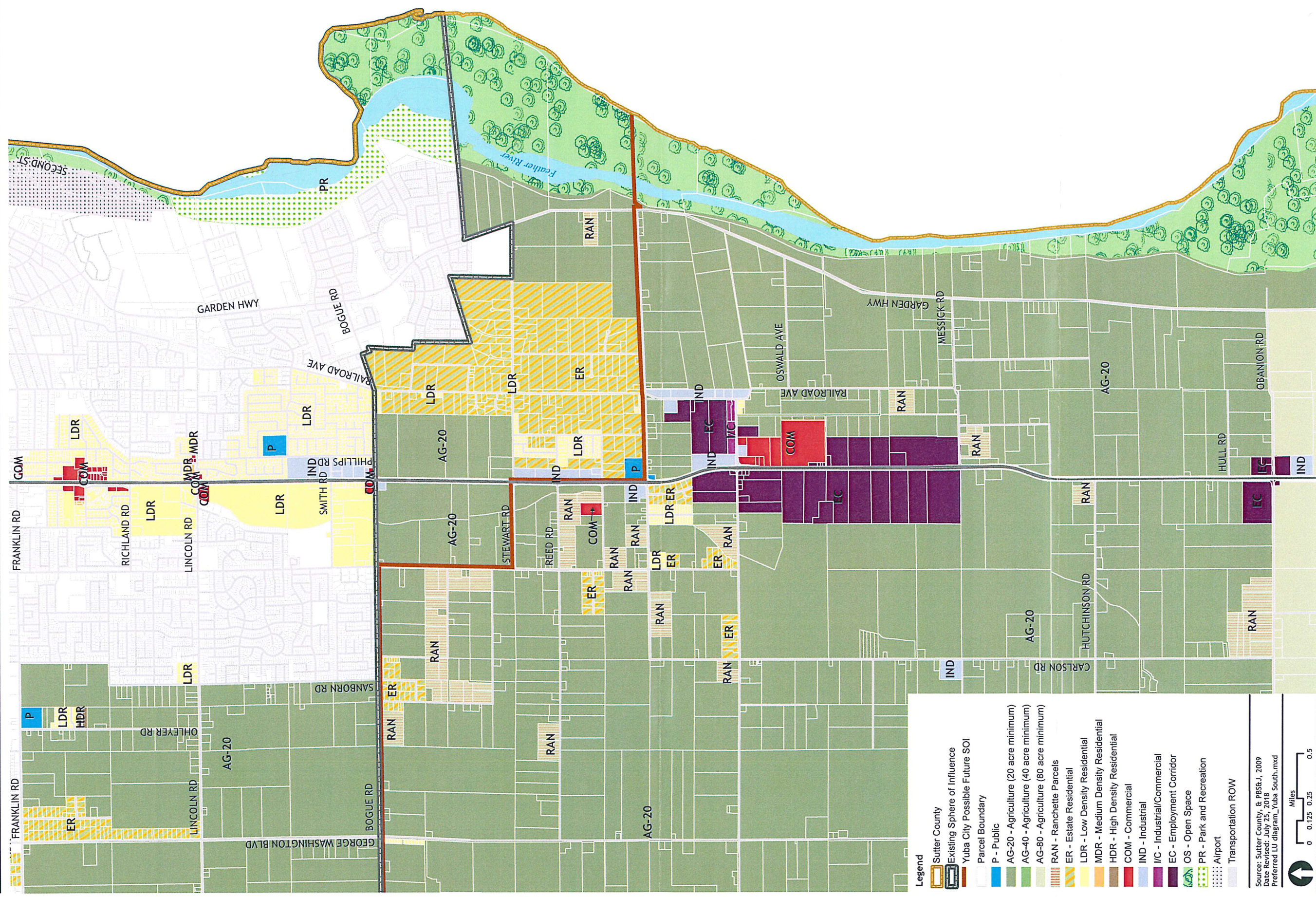


LIVE OAK SPHERE OF INFLUENCE
FIGURE A1-2









Legend

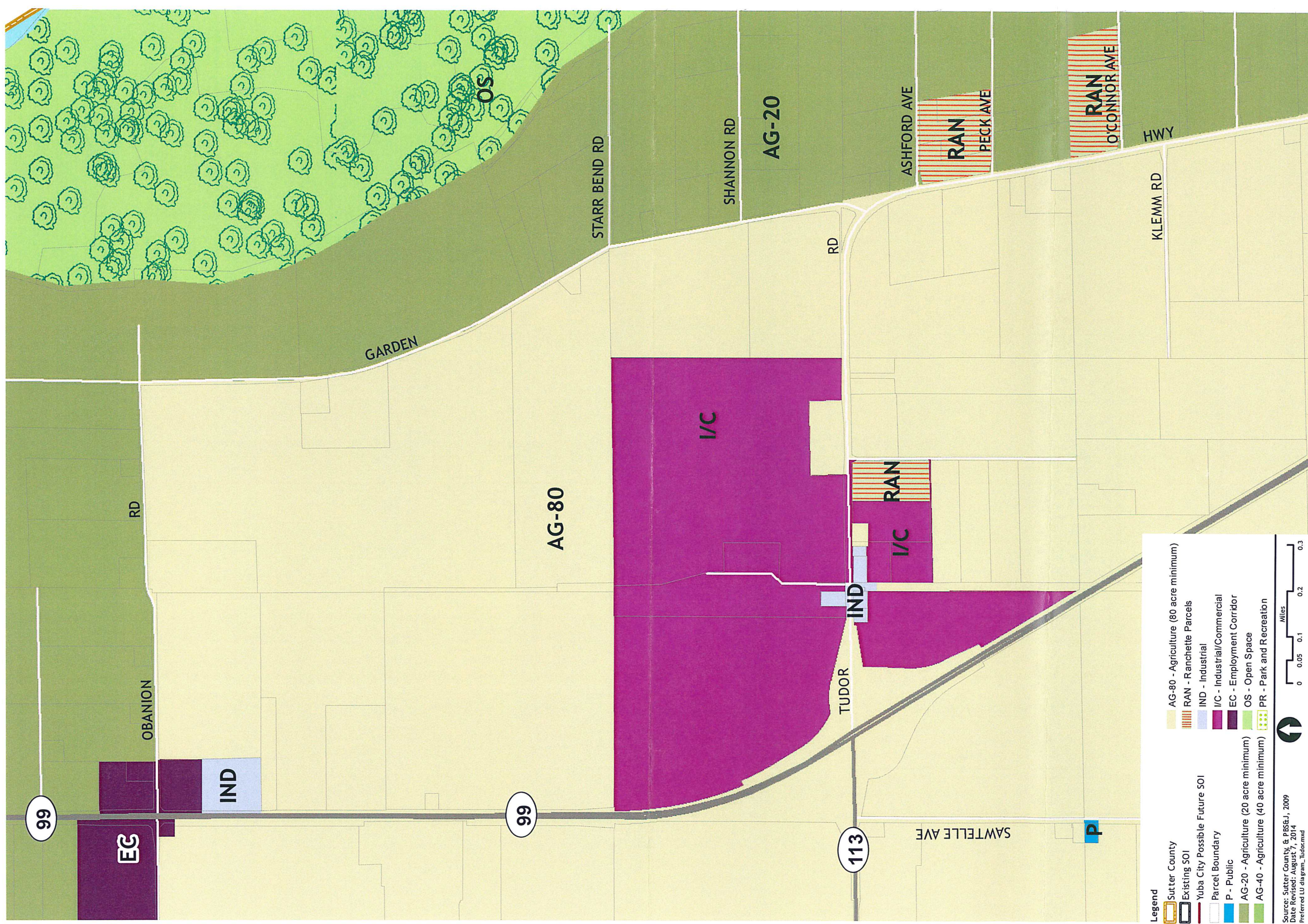
- Sutter County
- Existing Sphere of Influence
- Yuba City Possible Future SOI
- Parcel Boundary
- P - Public
- AG-20 - Agriculture (20 acre minimum)
- AG-40 - Agriculture (40 acre minimum)
- AG-80 - Agriculture (80 acre minimum)
- RAN - Ranchette Parcels
- ER - Estate Residential
- LDR - Low Density Residential
- MDR - Medium Density Residential
- HDR - High Density Residential
- COM - Commercial
- IND - Industrial
- I/C - Industrial/Commercial
- EC - Employment Corridor
- OS - Open Space
- PR - Park and Recreation
- Airport
- Transportation ROW

Source: Sutter County, & PBS&J, 2009
Date Revised: July 25, 2018
Preferred LU diagram_Yuba South.mxd

Miles
0 0.125 0.25 0.5



YUBA CITY SPHERE OF INFLUENCE SOUTH
FIGURE A1-6



Legend

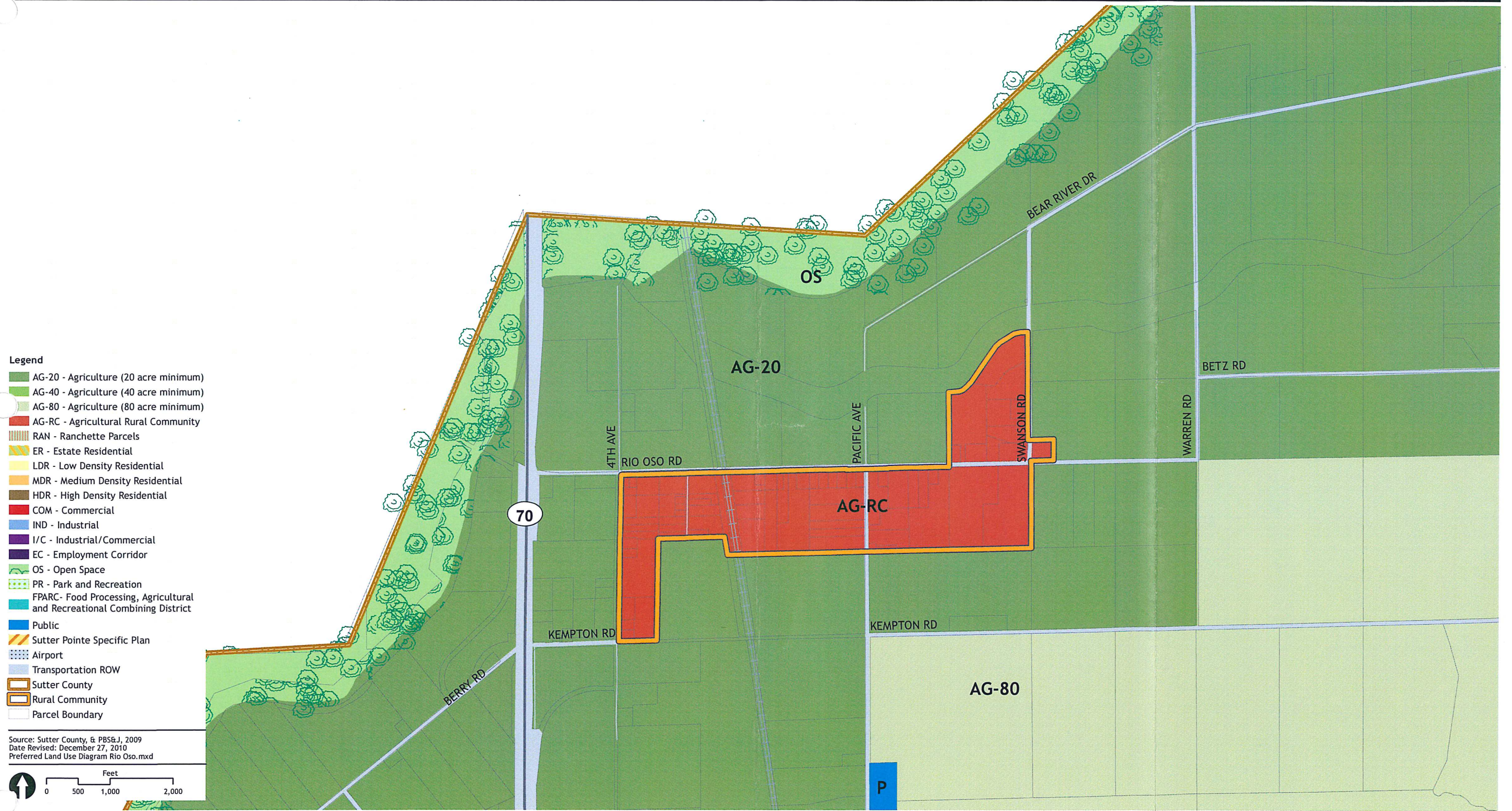
- Sutter County
- Existing SOI
- Yuba City Possible Future SOI
- Parcel Boundary
- P - Public
- AG-20 - Agriculture (20 acre minimum)
- AG-40 - Agriculture (40 acre minimum)
- AG-80 - Agriculture (80 acre minimum)
- RAN - Ranchette Parcels
- IND - Industrial
- I/C - Industrial/Commercial
- EC - Employment Corridor
- OS - Open Space
- PR - Park and Recreation

Source: Sutter County & PBS&J, 2009
Date Revised: August 7, 2014
Preferred LU diagram_Tudor.mxd

0 0.05 0.1 0.2 0.3 Miles

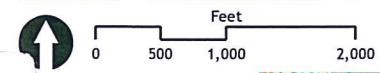


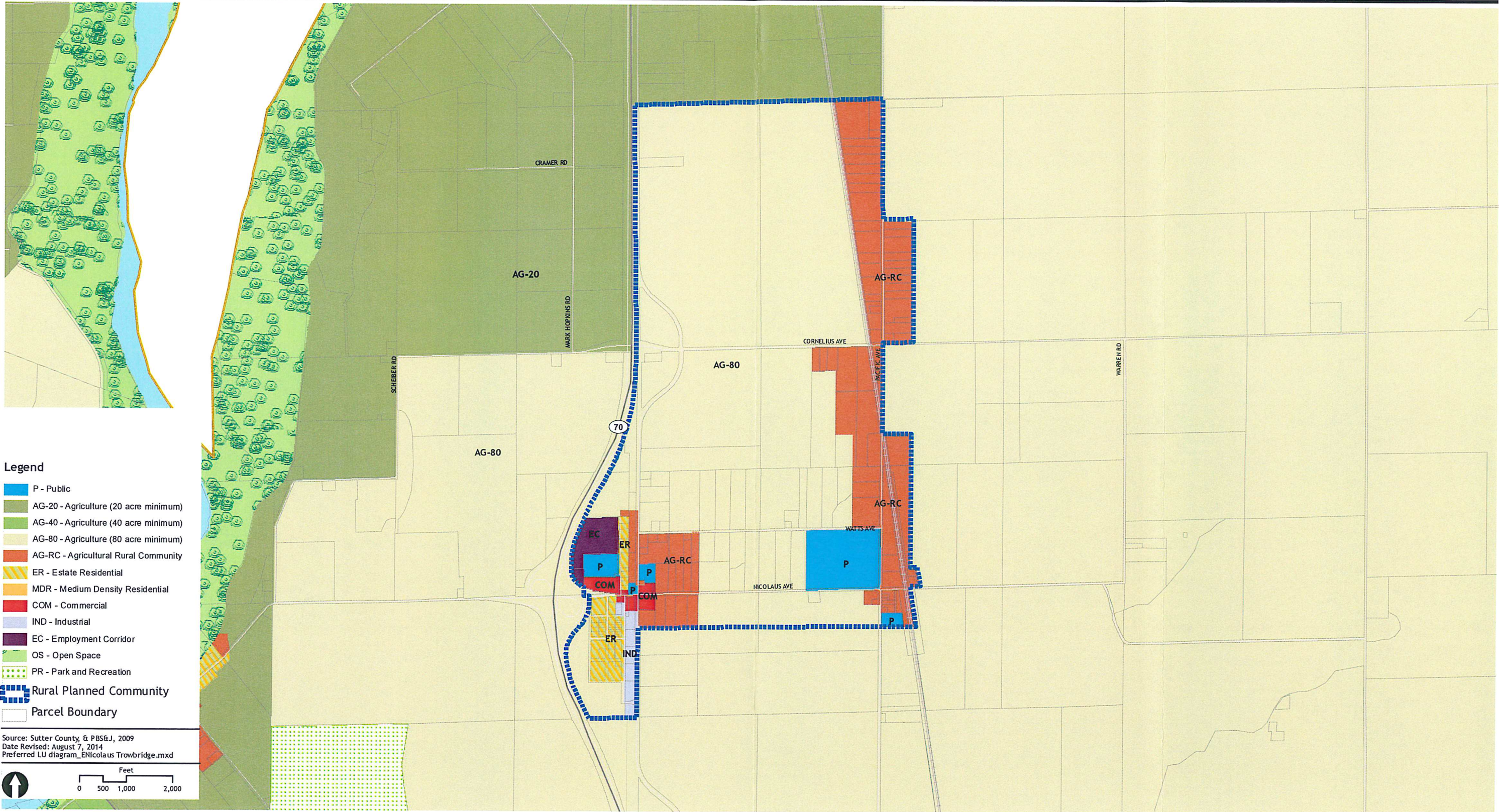
TUDOR INDUSTRIAL/COMMERCIAL AREA
FIGURE A1-7



- Legend**
- AG-20 - Agriculture (20 acre minimum)
 - AG-40 - Agriculture (40 acre minimum)
 - AG-80 - Agriculture (80 acre minimum)
 - AG-RC - Agricultural Rural Community
 - RAN - Ranchette Parcels
 - ER - Estate Residential
 - LDR - Low Density Residential
 - MDR - Medium Density Residential
 - HDR - High Density Residential
 - COM - Commercial
 - IND - Industrial
 - I/C - Industrial/Commercial
 - EC - Employment Corridor
 - OS - Open Space
 - PR - Park and Recreation
 - FPARC - Food Processing, Agricultural and Recreational Combining District
 - Public
 - Sutter Pointe Specific Plan
 - Airport
 - Transportation ROW
 - Sutter County
 - Rural Community
 - Parcel Boundary

Source: Sutter County, & PBS&J, 2009
Date Revised: December 27, 2010
Preferred Land Use Diagram Rio Oso.mxd



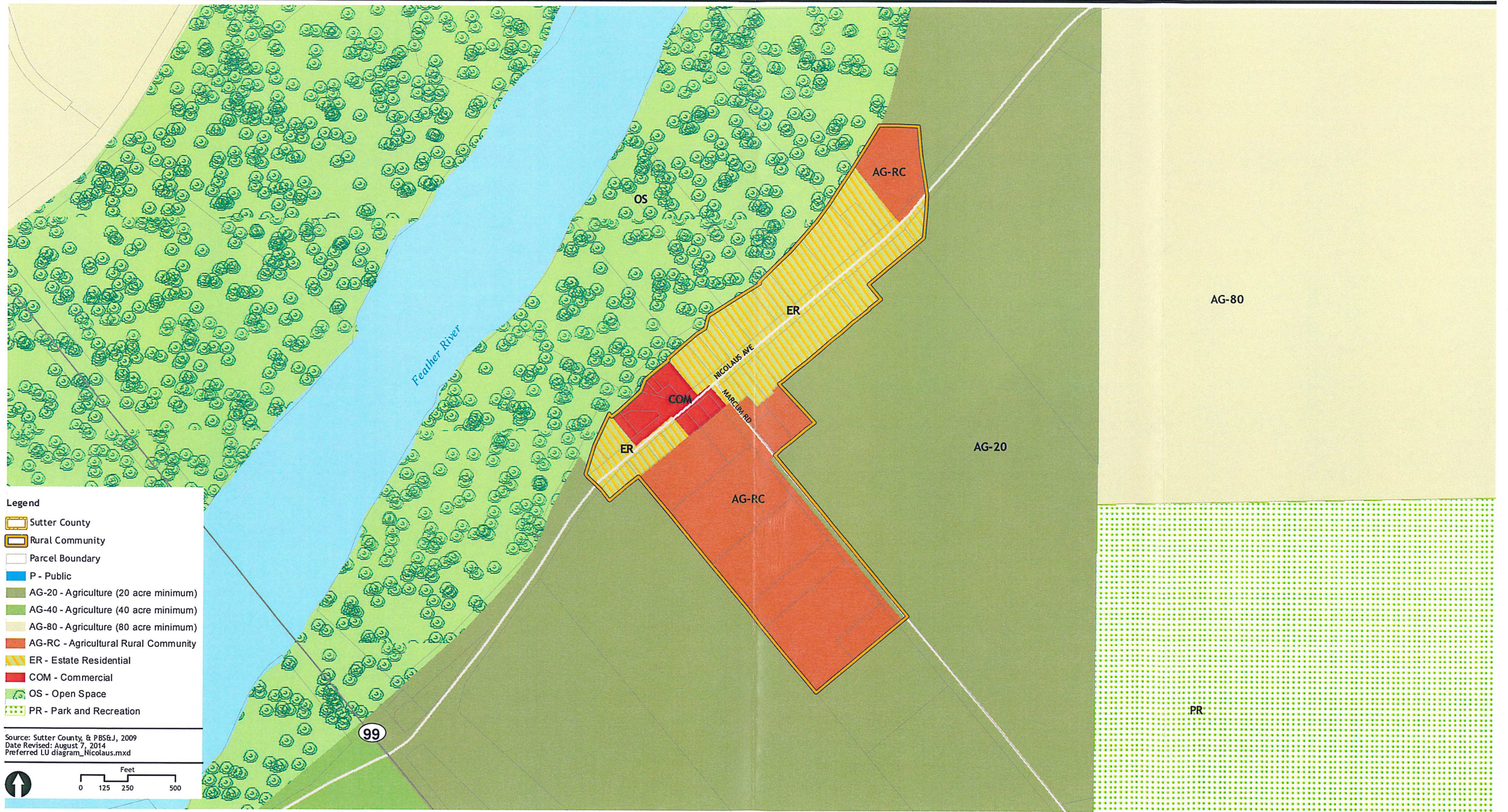














Legend

- P - Public
- AG-20 - Agriculture (20 acre minimum)
- AG-40 - Agriculture (40 acre minimum)
- AG-80 - Agriculture (80 acre minimum)
- AG-RC - Agricultural Rural Community
- ER - Estate Residential
- MDR - Medium Density Residential
- COM - Commercial
- IND - Industrial
- EC - Employment Corridor
- OS - Open Space
- PR - Park and Recreation
- Rural Planned Community
- Parcel Boundary

Source: Sutter County, & PBS&J, 2009
Date Revised: August 7, 2014
Preferred LU diagram_ENicolaus Trowbridge.mxd

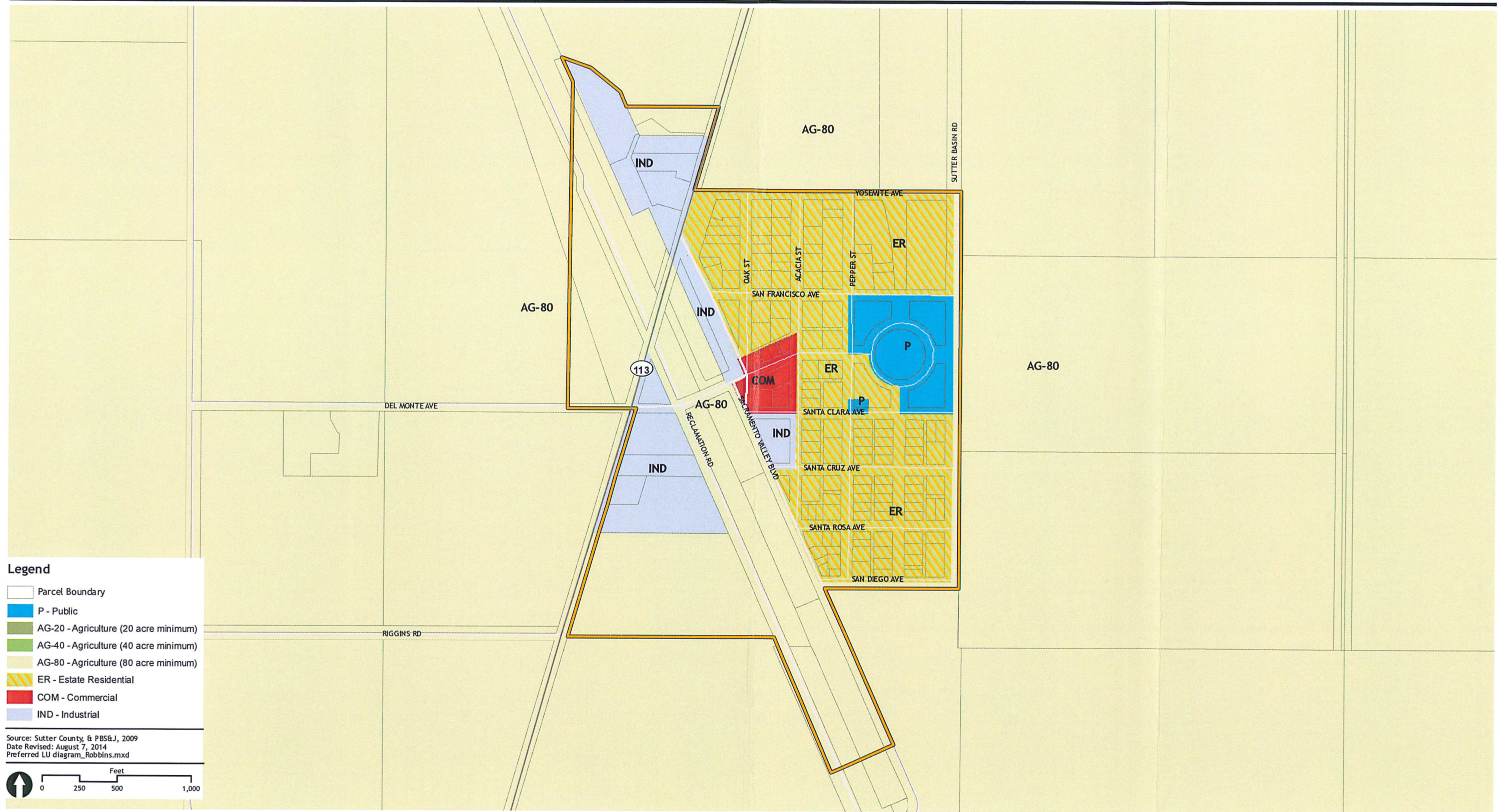












- Legend**
-  Sutter County
 -  Rural Community
 -  Parcel Boundary
 -  P - Public
 -  AG-20 - Agriculture (20 acre minimum)
 -  AG-40 - Agriculture (40 acre minimum)
 -  AG-80 - Agriculture (80 acre minimum)
 -  AG-RC - Agricultural Rural Community
 -  ER - Estate Residential
 -  COM - Commercial
 -  OS - Open Space
 -  PR - Park and Recreation

Source: Sutter County, & PBS&J, 2009
Date Revised: August 7, 2014
Preferred LU diagram_Nicolaus.mxd



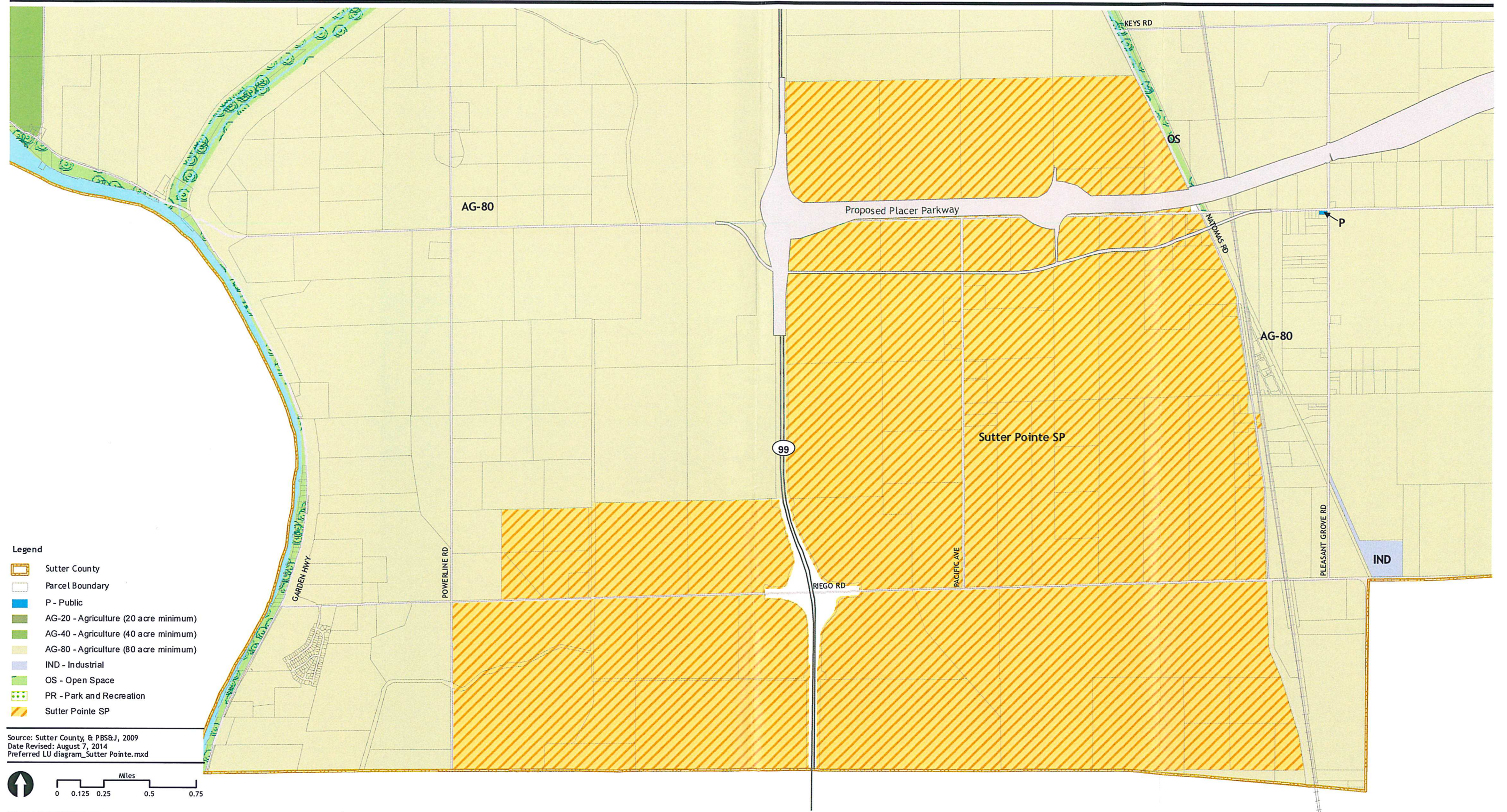












Legend

-  Parcel Boundary
-  P - Public
-  AG-20 - Agriculture (20 acre minimum)
-  AG-40 - Agriculture (40 acre minimum)
-  AG-80 - Agriculture (80 acre minimum)
-  ER - Estate Residential
-  COM - Commercial
-  IND - Industrial

Source: Sutter County, & PBS&J, 2009
Date Revised: August 7, 2014
Preferred LU diagram_Robbins.mxd





- Legend**
-  Sutter County
 -  Parcel Boundary
 -  P - Public
 -  AG-20 - Agriculture (20 acre minimum)
 -  AG-40 - Agriculture (40 acre minimum)
 -  AG-80 - Agriculture (80 acre minimum)
 -  IND - Industrial
 -  OS - Open Space
 -  PR - Park and Recreation
 -  Sutter Pointe SP

Source: Sutter County, & PBS&J, 2009
Date Revised: August 7, 2014
Preferred LU diagram_Sutter Pointe.mxd

