




SUTTER COUNTY
GENERAL PLAN UPDATE

SUTTER COUNTY

General Plan Update Technical Background Report February 2008



SUTTER COUNTY GENERAL PLAN UPDATE TECHNICAL BACKGROUND REPORT

PREPARED FOR:

SUTTER COUNTY

PREPARED BY:

PBS&J

IN PARTNERSHIP WITH:

West Yost & Associates

DKS Associates

MuniFinancial

Applied Development Economics

Key Steps of the General Plan Update Process

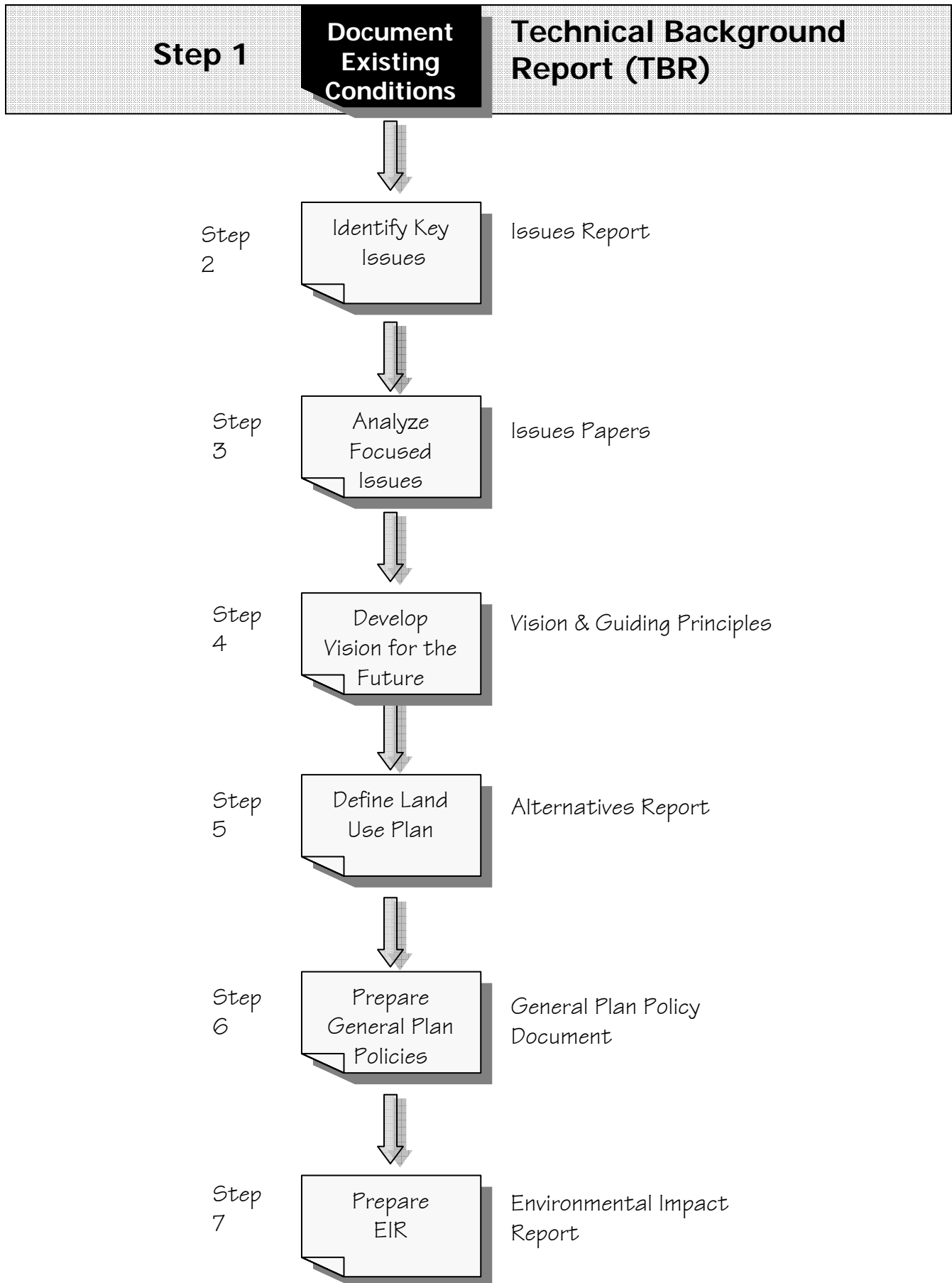


TABLE OF CONTENTS

<u>Chapter</u>	<u>Page</u>
1.0 Introduction.....	1-1
2.0 Community Development	
2.1 Land Use.....	2.1-1
2.2 Demographic and Economic Analysis.....	2.2-1
2.2.1 Demographic Trends and Conditions.....	2.2-1
2.2.2 Economic Development Trends and Conditions	2.2-8
2.2.3 Agricultural Economics.....	2.2-15
3.0 Infrastructure and Community Services	
3.1 Infrastructure	3.1-1
3.1.1 Potable Water Systems and Supply.....	3.1-1
3.1.2 Agricultural Water Systems and Supply	3.1-27
3.1.3 Wastewater Systems.....	3.1-35
3.1.4 Stormwater Drainage	3.1-45
3.1.5 Levees and Flood Control	3.1-63
3.1.6 Solid Waste Management	3.1-67
3.1.7 Energy Resources.....	3.1-77
3.1.8 Telecommunications	3.1-92
3.2 Mobility	3.2-1
3.2.1 Streets and Highways	3.2-1
3.2.2 Transit and Rail	3.2-25
3.2.3 Bikeways	3.2-30
3.2.4 Air Travel and Airports.....	3.2-32
3.3 Community Services and Facilities.	3.3-1
3.3.1 Law Enforcement	3.3-1
3.3.2 Fire Protection and Emergency Services	3.3-8
3.3.3 Schools.....	3.3-16
3.3.4 Parks and Recreation.....	3.3-43
3.3.5 General Government, Civic, and Cultural Facilities.....	3.3-50
4.0 Environmental Resources	
4.1 Biological Resources.....	4.1-1
4.2 Agriculture, Soils, and Mineral Resources	4.2-1
4.3 Hydrology and Water Quality	4.3-1
4.4 Air Quality.....	4.4-1
4.5 Visual Resources	4.5-1
4.6 Prehistoric and Historic Resources	4.6-1

Chapter	Page
5.0 Community and Safety Hazards	
5.1 Geologic and Seismic Hazards.....	5.1-1
5.2 Fire Hazards	5.2-1
5.3 Hazardous Materials Management	5.3-1
5.4 Noise.....	5.4-1
5.5 Flood Hazards	5.5-1
6.0 References	6-1
7.0 Glossary	7-1

LIST OF TABLES

Table	Page
2.1-1 Sutter County Cities and Rural Communities	2.1-5
2.1-2 Existing Land Uses.....	2.1-6
2.1-3 Rural Communities Existing Land Uses	2.1-9
2.1-4 Sutter County Important Farmlands	2.1-12
2.1-5 General Plan Adopted Land Use Designations	2.1-15
2.1-6 Rural Communities GP Land Use Designations.....	2.1-19
2.1-7 General Plan Land Use Designations and Implementing Districts	2.1-28
2.1-8 County Zoning Districts	2.1-31
2.1-9 Rural Communities Zoning Districts	2.1-32
2.2-1 Change in Race of Sutter County Residents, 1990-2006.....	2.2-2
2.2-2 Regional Historical Population Shares and Growth, 1990-2007	2.2-3
2.2-3 Incorporated Area Share of County Population, 1970-2007.....	2.2-4
2.2-4 Sutter County Growth Projections, 2007-2035.....	2.2-5
2.2-5 SACOG 2035 Projections in Detail.....	2.2-6
2.2-6 Jobs-Housing Ratio for Sutter County, 1990-2005.....	2.2-7
2.2-7 Work Location for Sutter County Workers, 2000	2.2-7
2.2-8 Place of Residence for Those Working in Sutter County, 2000	2.2-8
2.2-9 Business Establishments, Wages, and Covered Employment in Region, 2001-2006	2.2-10
2.2-10 Change in Educational Attainment in Sutter County, 1990-2006	2.2-11
2.2-11 Sutter County Employment Trends, 1990-2005	2.2-12
2.2-12 Top 20 Sutter County Employers, 2007	2.2-13
2.2-13 Sutter County Employment Projections, 2002-2012.....	2.2-14
2.2-14 Residential Market Performance, 2002-2007, Sutter County	2.2-14
2.2-15 Industrial Market Performance, 2Q 2007, Sutter County.....	2.2-15
2.2-16 Farmland Conversion, Sutter County, 1988-2006	2.2-19
2.2-17 Farmland Conversion, State of California, 1992-2006	2.2-20
2.2-18 Sutter County Crop Values, 1992 & 2006	2.2-22
2.2-19 Sutter County Crop Production (Tons), 1992 & 2006.....	2.2-23

2.2-20 Sutter County Crop Prices Per Unit (\$/ton), 1992 & 2006	2.2-24
2.2-21 Sutter County Harvested Acres, 1992 & 2006	2.2-25
2.2-22 Rice Production (Tons), 1992-2006	2.2-26
2.2-23 Walnut Production (Tons), 1992-2006	2.2-27
2.2-24 Almond Production (Tons), 1992 -2006	2.2-28
2.2-25 Total Shipments, 2005-2006 Crop Year California Dried Plums	2.2-28
2.2-26 Food and Agriculture Cluster Employment Growth and Concentration, Sutter County	2.2-30
3.1-1 Average Design Storm Rainfall Depths for Sutter County	3.1-49
3.1-2 2006 Ostrom Road Landfill Disposal Amounts for Each RWMA Jurisdiction	3.1-70
3.1-3 Sutter-Yuba Solid Waste Facilities	3.1-70
3.1-4 Sutter-Yuba Solid Waste Disposal and Diversion Estimations	3.1-72
3.1-5 Sutter County Waste Stream Diversion Programs	3.1-74
3.1-6 Private Recycling Facilities	3.1-74
3.1-7 Sutter County Energy Consumption	3.1-78
3.1-8 Sutter County Housing Units and Type of Housing Heating Fuel, 2000	3.1-80
3.1-9 County Gas Wells by Type	3.1-80
3.1-10 Natural Gas and Oil Well Permits Issued	3.1-83
3.1-11 Sutter County Active Gas Well Production and Reserve Estimates	3.1-84
3.1-12 Tenure by Telephone Service Available, 2000	3.1-93
3.2-1 Roadway Miles in Sutter County by Jurisdiction	3.2-5
3.2-2 Levels of Service Definitions – Urban Street Segments	3.2-10
3.2-3 Levels of Service Definitions – Expressways	3.2-11
3.2-4 Levels of Service Definitions – Rural Highways	3.2-12
3.2-5 Levels of Service Definitions – Freeways	3.2-13
3.2-6 Roadway Levels of Service Thresholds	3.2-15
3.2-7 Existing Operating Conditions on State Highway Segments	3.2-16
3.2-8 Existing Operating Conditions on County Roadways	3.2-17
3.2-9 Truck Route Designations on State Highways	3.2-21
3.2-10 High Incidence Intersection Report	3.2-22
3.2-11 Intersection Collision Severity Summary	3.2-22
3.2-12 Existing Bikeways Description (as of 2007)	3.2-31
3.3-1 2005 Unincorporated Sutter County Crime Statistics	3.3-5
3.3-2 Sutter County Crime Statistics	3.3-6
3.3-3 Fire Calls, 2006	3.3-10
3.3-4 2007 School District Enrollment Figures	3.3-18
3.3-5 Sutter County Schools by Type 2005-06	3.3-21
3.3-6 School Districts Servicing Sutter County	3.3-23
3.3-7 Schools by Type Live Oak Unified School District, 2005-06	3.3-29
3.3-8 Schools by Type Yuba City Unified School District, 2006-07	3.3-34

TABLE OF CONTENTS

3.3-9 Private School Enrollment Figures 3.3-36

3.3-10 Sutter County Parks and Recreation Areas..... 3.3-44

3.3-11 Sutter County Libraries and Accessibility 3.3-59

4.1-1 Special-status Species Potentially Occurring in Sutter County 4.1-16

4.2-1 2002 Farm Size by Acreage 4.2-3

4.2-2 Summary Farm Value of Agricultural Production 4.2-3

4.2-3 Cropland According to Use..... 4.2-4

4.2-4 FMMP 2000 Sutter County Farmland..... 4.2-13

4.2-5 Mineral Land Classifications..... 4.2-15

4.2-6 2006 Permitted Surface Mines 4.2-16

4.3-1 Potential Pollutants Generated by Land Use Type..... 4.3-4

4.4-1 Ambient Air Quality Standards Applicable in California..... 4.4-5

4.4-2 Health Effects of Main Criteria Air Pollutants..... 4.4-6

4.4-3 Exceedances of Federal and State Air Pollution Standards in Sutter County 4.4-8

4.4-4 Criteria Air Pollutants Attainment Status of the Feather River Air Quality
Management District Area 4.4-9

4.4-5 2006 Estimated Average Daily Emissions for Sutter County (tons/day)..... 4.4-11

4.4-6 Point Source Facilities and Criteria Pollutant Emissions (tons/year) 4.4-14

5.1-1 Earthquake Magnitude Scales..... 5.1-6

5.1-2 Local and Regional Faults 5.1-7

5.3-1 U.S. EPA, Region IX - U.S. Superfund Sites, National Priority List..... 5.3-4

5.3-2 TSC EnviroStor Site List..... 5.3-4

5.3-3 CVRWQCB Site Cleanup List – Sutter County..... 5.3-6

5.3-4 Leaking Underground Storage Tanks in Sutter County..... 5.3-7

5.4-1 Representative Environmental Noise Levels..... 5.4-3

5.4-2 Typical Sources and Responses to Ground-borne Vibration 5.4-5

5.4-3 Typical Sound Levels Generated by Small Aircraft (dBA) 5.4-9

5.4-4 Daytime Noise Measurements at Selected Locations in Sutter County 5.4-15

5.4-5 Summary of Noise Levels Identified as Requisite to Protect Public Health and
Welfare with an Adequate Margin of Safety 5.4-18

5.4-6 FTA Impact Criteria for Noise-Sensitive Uses (dBA)..... 5.4-19

5.4-7 State of California Noise Compatibility Guidelines 5.4-21

5.5-1 Dams Under State Jurisdiction with Potential to Flood Sutter County..... 5.5-4

LIST OF FIGURES

Figure	Page
1.1-1 Regional Location	1-2
2.1-1 Sutter County & Surrounding Areas.....	2.1-3
2.1-2 Existing Land Use	2.1-7
2.1-3 Existing General Plan Land Use	2.1-13
2.1-4 Existing Zoning Districts.....	2.1-29
2.2-1 Value of Agricultural Production in Sutter County.....	2.2-21
2.2.2 Sutter County and California Dried Plum Production & Exports	2.2-29
3.1-1 Water Service Areas.....	3.1-5
3.1-2 Groundwater Levels in Southern Sutter County	3.1-7
3.1-3 Groundwater Levels in Central Sutter County	3.1-9
3.1-4 Groundwater Levels in Northern Sutter County	3.1-11
3.1-5 Groundwater Quality - Arsenic.....	3.1-13
3.1-6 Groundwater Quality - Nitrate	3.1-15
3.1-7 Groundwater Quality - Iron.....	3.1-17
3.1-8 Groundwater Quality - Manganese.....	3.1-19
3.1-9 Ground Water Quality-Bentazon, Chloride, DBCP	3.1-21
3.1-10 Irrigation Water	3.1-29
3.1-11 Sewer Services.....	3.1-37
3.1-12 Watersheds within Sutter County.....	3.1-47
3.1-13 Wadsworth Canal at Franklin Road	3.1-51
3.1-14 O'Banion Pump Station.....	3.1-53
3.1-15 Flood Zones and Flood Control Levees.....	3.1-59
3.1-16 Yuba-Sutter Household Waste Stream Composition Estimates	3.1-69
3.1-17 Yuba-Sutter Business Waste Stream Composition Estimates.....	3.1-69
3.1-18 Sutter-Yuba Solid Waste Disposal Indicators	3.1-73
3.1-19 Oil, Gas and Geothermal Resources.....	3.1-81
3.2-1 Roadway Network.....	3.2-3
3.2-2 County Designated Truck Routes in Yuba City Urban Area	3.2-20
3.2-3 Yuba-Sutter Fixed Route Transit Map	3.2-28
3.2-4 Sutter County Existing Bikeways	3.2-33
3.3-1 Law Enforcement and Fire Protection.....	3.3-11
3.3-2 School Locations	3.3-19
3.3-A Sutter County Enrollment Trends.....	3.3-22
3.3-B Enrollment by Grade Sutter County, 2005-06.....	3.3-22
3.3-C Students by Ethnicity Sutter County, 2005-06.....	3.3-23

TABLE OF CONTENTS

3.3-D Brittan Elementary School District Enrollment Trends..... 3.3-26

3.3-E Brown Elementary School District Enrollment Trends..... 3.3-27

3.3-F East Nicolaus Joint Union High School District Enrollment Trends..... 3.3-27

3.3-G Franklin Elementary School District Enrollment Trends 3.3-28

3.3-H Live Oak Unified School District Enrollment Trends..... 3.3-29

3.3-I Marcum-Illinois Union School District Enrollment Trends..... 3.3-30

3.3-J Meridian Elementary School District Enrollment Trends 3.3-31

3.3-K Nuestro Elementary School District Enrollment Trends 3.3-31

3.3-L Pleasant Grove Joint Union School District Enrollment Trends 3.3-32

3.3-M Sutter Union High School District Enrollment Trends..... 3.3-33

3.3-N Winship-Robbins Elementary School District Enrollment Trends..... 3.3-34

3.3-O Yuba City School District Enrollment Trends..... 3.3-35

3.3-P Special Education School District Enrollment Trends 3.3-38

3.3-3 Sutter County Governmental Structure 3.3-51

4.1-1 Habitats 4.1-7

4.1-2 Special-Status Species..... 4.1-11

4.2-1 Sutter County Agricultural Production Trends 4.2-2

4.2-2 Agricultural Production 4.2-5

4.2-3 Important Farmlands and Williamson Act Lands 4.2-7

4.2-4 Soil Classifications..... 4.2-9

4.2-5 Geology and Mining Operations 4.2-17

4.6-1 Historic Resources 4.6-7

5.1-1 Seismic Hazards..... 5.1-9

5.2-1 Fire Threat..... 5.2-3

5.4-1 Existing Roadway and Airport Noise Contours 5.4-7

5.4-2 Noise Monitoring Locations 5.4-11

5.4-3 Noise Monitoring Intervals..... 5.4-13