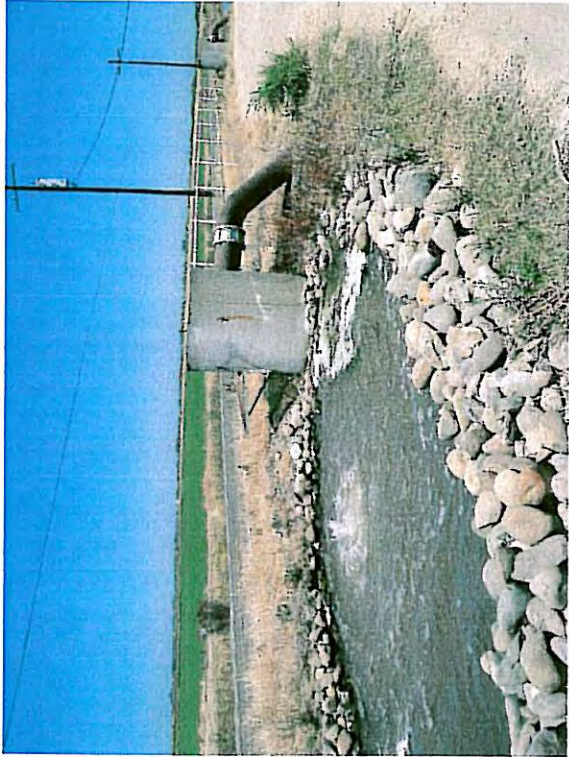


ATTACHMENT E

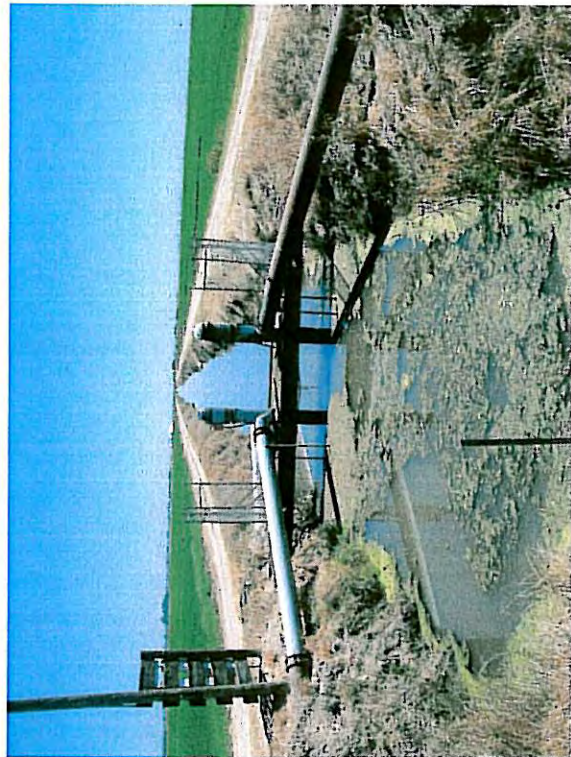
Representative Photos of Pumping and Drainage Stations – 7/06/06



Pumps at East/West drainage, south of Riego Road, view to east.



Pumps at East/West drainage, south of Riego Road, view to west.



Pumps at North/South drainage, south of Riego Road, view to south.



Pumps at North/South drainage, south of Riego Road, view to north.

Representative Photos of Pumping and Drainage Stations - 7/06/06



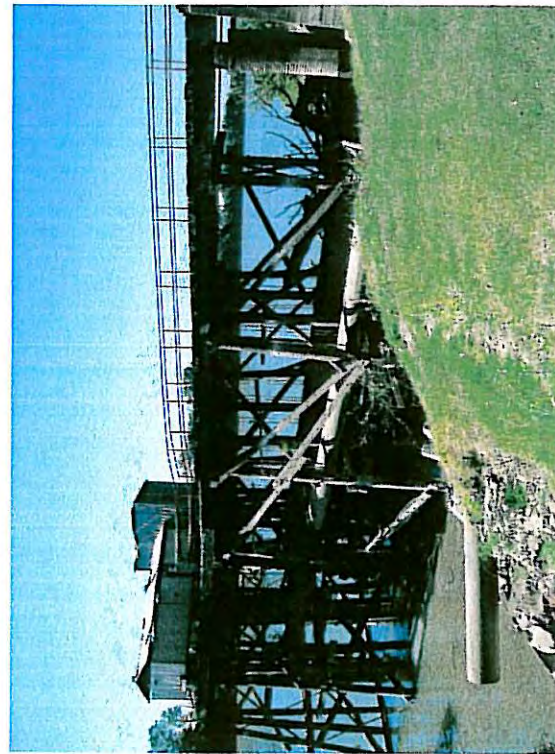
Drainage station east of Hwy 99, approximately 3,000 feet south of Riego Road, view to north.



Drainage station east of Hwy 99, approximately 3,000 feet south of Riego Road, view to south.



Pumping plant pumping into Sacramento River west of Levee Road and south of Riego Road, view to west.

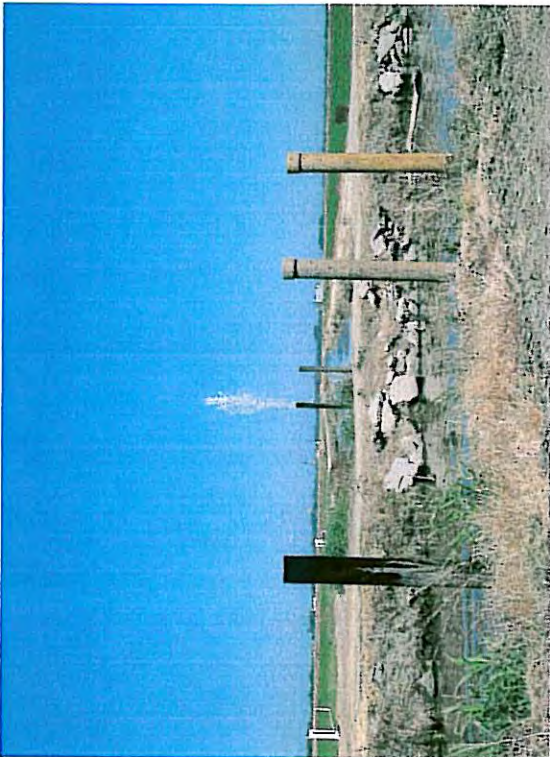


Pumping plant pumping into Sacramento River west of Levee Road and south of Riego Road, view to west.

Representative Photos of Pumping and Drainage Stations - 7/06/06



Pump station at E/W - N/S intersection approximately 3,000 feet south of Pacific-Riego Road intersection, view to west.



Pump station at E/W - N/S intersection approximately 3,000 feet south of Pacific-Riego Road intersection, view to east.



Pump station at E/W - N/S intersection approximately 3,000 feet south of Pacific-Riego Road intersection, view to northeast.



Pump station at E/W - N/S intersection approximately 3,000 feet south of Pacific-Riego Road intersection, view to northwest.

Representative Photos of Pumping and Drainage Stations - 7/06/06