

Kill the Bug 
Recycle the Jug 

We recycled 93,500 pounds in 2013! Way to go Sutter County! At this rate we will reach one half million pounds by the middle of 2014! Our recycling program will be changing; we will be offering less recycle day events and placing the cotton trailers in short term, conveniently located areas. So far this has proven a hit, as growers can take their containers over on their time schedule. To that end, we will only have 3 recycle days in 2014 and two in 2015.

Pick up a flyer so you can have a schedule of events or short term locations and recycle when you can!

Many thanks to all the growers who participate in this important program. Spread the word, recycling is easy!

~Jan Kendel



Need Hours?

Private Applicator License Recertification Requirements

(Based upon the first letter of your last name)

<u>A-H</u>	<u>I-O</u>	<u>R-Z</u>
Expire: 12/31/15	Expire: 12/31/13	Expire: 12/31/14

Laws & Regulations: 2 Hours Other: 4 Hours
 PA cards are good for three years and are renewed based upon the first initial of your last name. You must have at least six hours of documented continuing education, of which 2 hours shall be in laws and regulations.

If you obtain a new PA card, or renew your old PA card in the middle of a renewal cycle, you must obtain a minimum of 2 hours of continuing education per year.

Private Applicator Continuing Education Classes

- Sutter County Veteran's Memorial Building
- November 14, 2013 (9 am – 12 pm) 3 hr Laws & Regs**
 CalAgPermits use reporting; Farm labor contractors; Respirator use and training; Pesticide safety
 - December 5, 2013 (8 am – 12 pm) ½ hr Laws & Regs, 3½ hrs Other**
 CalAgPermits use reporting, UC walnut and peach issues update; Irrigated pasture management; Field diagnostic tools
 - December 9, 2013 (9 am – 12 pm) ½ hr Laws & Regs**
 Squirrel control; Mite control for almonds; CalAgPermits use reporting; Good agricultural practices
 - December 12, 2013 (9 am – 12 pm) 2½ hrs Laws & Regs, ½ hr Other**
 RoundUp resistance; UC walnut and peach issues update; Pesticide plastics recycling program; Mite control for almonds; CalAgPermits use reporting

****Hours have been approved for QAL, QAC and PCA licenses****

UC Cooperative Extension Meetings

www.ce.sutter.ucdavis.edu

- January 16, 2014 (8 am - 12 pm)**
 Annual Peach Meeting, Janine Hasey
- January 26, 2014 (all day event)**
 Spray Safe meeting, Yuba/Sutter Fairgrounds
- February 26, 2014 (1 pm - 4:30 pm)**
 Annual Walnut Meeting, Janine Hasey

Employee Safety Meetings

- March 2013 (8 am - 12 pm) Three meetings - TBA**
 Basic pesticide safety instructions for all handlers..
 Annual fit-testing will be available.



MARK P. QUISENBERRY
 Agricultural Commissioner
 Sealer of Weights & Measures

Pesticide Use Enforcement
 Newsletter

142 Garden Highway Yuba City, CA 95991
 (530) 822-7503 (530) 822-7511 fax
<http://www.co.sutter.ca.us/doc/government/depts/ag/>

Newsletter and Updates for 2013/14



Employee Training

Annual safety training for employees that handle pesticides is required by law. Training topics include: pesticide labels, hazards, routes of exposure, symptoms of overexposure, emergency medical care, decontamination procedures, personal protection equipment, safety requirements, environmental concerns, medical supervision, Pesticide Safety Information Series (PSIS) "A8" and MSDS locations, and employee rights.

Prior to employees handling pesticides, a hazard communication program and advanced emergency medical care must be in place. A hazard communication program includes complete copies of the PSIS, pesticide use records and MSDS. Advanced emergency medical care planning information shall be posted at the worksite.

Proper documentation is essential for an effective training and hazard communication program. Always have your employee sign and date the training form and keep this paperwork for at least two years. Update and compile your MSDS on an annual basis. Pesticide use records should be current and available for review.



*Kill the Bug
Recycle the Jug*

SUTTER COUNTY AG DEPARTMENT

2014 Pesticide Container Recycle Days

Hours of operation are 8 am to 2 pm.

March 31	Grower's Ag (Yuba City) 2100 Everglade	671-3571
May 21	Live Oak Cemetery (Live Oak) 3545 Pennington Road	695-3343
June 25	Wilbur-Ellis (Yuba City) 900 George Washington	673-0921

All containers must be triple-rinsed, with the easy-to-remove-label and lids removed. 30 gallon barrels must be cut in half, length-wise.

In addition, for growers' convenience, these locations are available for container drop-off:

Grower's Ag Service permanent recycling location

Sutter Mutual Water Tisdale Yard permanent recycling location

Bear River Supply's Tank Farm available July 7-August 28, 2014

Davis Machine Shop available August 12-October 15, 2014

All containers must be inspected by Agricultural Commissioner's staff prior to drop off.

Restrictions apply

Call Sutter County Ag at 822-7503 for more information



NEWS

UPDATED

Employee Personal Protection

Pesticide safety training, hazard communication program, respirator fit-test records and medical evaluations are all very important pre-application paperwork issues. However if you cannot assure that all personal protection equipment is provided and worn by your employees, then your employee pesticide safety program will never be effective.

Prior to pesticide applications, be sure to review all of the required paperwork for your employees and assure they up-to-date. Take inventory of the personal protection equipment you have on hand and assure you have everything required by the label for your most used items.

For every application assure that your employee has a complete decontamination kit which includes access to soap, water, single use towels, and an extra set of coveralls. Put these items together and keep them where your employees can take them out to the application site. As a reminder, for every application that requires the employee to wear safety glasses there must be an emergency pint of eyewash immediately available.

Nearly every application will require employees to wear chemical resistant gloves, safety glasses, chemical resistant boots and coveralls. Make sure you have these items on hand. Review the precautionary statements on the pesticide label for any additionally required personal protective equipment such as a chemical resistant apron or respirator. If the label has a signal word of "Danger" or "Warning," the employee must wear coveralls during the entire mixing process and application.

Pesticide labels may require specific types of respirators; if your employees use chemicals that require the use of a respirator, like Gramoxone, keep a supply of clean respirators on hand. Respirators should be kept separate from the chemical storage area.

As always, if you have any questions regarding personal protection equipment or employee safety in general feel free to contact our office.



Office of the Agriculture Commissioner
Sealer of Weights & Measures

<http://www.suttercounty.org/doc/government/depts/ag/aghome>

Dormant Spray Regulations

As a reminder, there are no regulatory requirements for the following applications:

- Dormant oil or biocontrol agent only
- Hydrologically isolated sites
- Diversion or runoff containment for 72 hours

If the above specifications cannot be met, you must:

- Obtain a written recommendation from a licensed PCA
- Maintain a 100-foot buffer from any sensitive aquatic sites
- Wind speed shall be 3-10 mph

Finally, applications will not be allowed if:

- 48 hours prior to a storm the soil moisture is at field capacity
- 48 hours after application, a storm will likely produce runoff

Aerial applicators must meet the above requirements **and**:

- Soil conditions do not allow field entry, or
- Bloom conditions necessitate aerial application

For a complete list of requirements, or if you have any questions, please contact our office or your advisor.

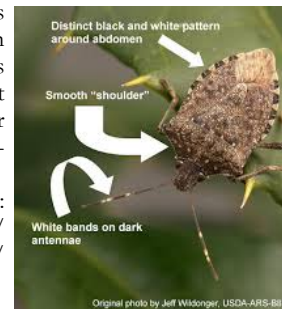
Brown Marmorated Stink Bug (BMSB)

Recently, BMSB was found within the city limits of Yuba City. BMSB, while similar to our native stink bugs, is slightly larger (2/3") and has distinct white banded antennae. BMSB is unique in that they congregate in high numbers and will over winter inside buildings and on walls. These insects can travel large distances by hitching rides in vehicles or in shipping containers.

Despite these finds it remains unclear whether the brown

marmorated stink bug has formally established itself in California and, if so, what its distribution is. If you suspect that you have BMSB on your property, please bring a sample to the Ag Department.

For more information:
www.ipm.ucdavis.edu/pestalert/pabrownmarmorated.html



Original photo by Jeff Wildonger, USDA-ARS-BIR