



Natural Resources Agency  
DEPARTMENT OF FISH AND WILDLIFE  
North Central Region/Region 2  
1701 Nimbus Road  
Rancho Cordova, CA 95670  
[www.wildlife.ca.gov](http://www.wildlife.ca.gov)  
(916) 358-2900

**GAVIN NEWSOM, Governor**  
**CHARLTON H. BONHAM, Director**



Greetings CDFW Partners:

The California Department of Fish and Wildlife (CDFW) would like to provide you with this Lake and Streambed Alteration (LSA) informational card for your use and reference. It provides information regarding when Notification of Lake or Streambed Alteration is required under Fish and Game Code section 1602. We are hoping you will distribute this card to anyone who asks about CDFW's LSA process (general public, engineers, developers, consultants, etc.), to your staff who issue permits, your code enforcement, public works, and compliance staff, or share with anyone who fields questions regarding permits for activities with potential impacts to lakes or ephemeral, intermittent, or perennial streams. This card and additional information on the LSA program can also be found on our website at <https://wildlife.ca.gov/Conservation/LSA> (link is also on the card attached).

In other news, CDFW has created a paperless process for applicants to submit LSA notifications. The new process, called EPIMS (Electronic Permit Information Management System), will be coming online at the end of March. Electronic submittal of LSA Notification forms will be voluntary to start. However, beginning May 1, online submittal through EPIMS will be mandatory for standard LSA Notifications. For LSA Notifications for long-term, master, gravel extraction, and routine maintenance agreements, it will be mandatory July 1. EPIMS can be accessed on our website at the same link on the LSA informational card and there are instructions to help with submitting Notifications. Those without computer access should contact their local CDFW Regional Office.

Feel free to contact our LSA Program Desk at (916) 358-2885, or [R2LSA@wildlife.ca.gov](mailto:R2LSA@wildlife.ca.gov), if you have questions or concerns.

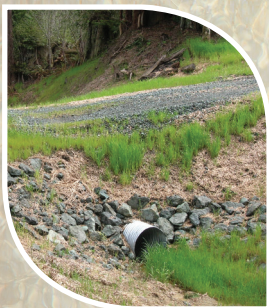
Thank you,

CDFW

# LAKE and STREAMBED ALTERATION

## When is Notification of Lake or Streambed Alteration (LSA) Required?

Fish and Game Code section 1602 requires an entity to notify the California Department of Fish and Wildlife (CDFW) prior to commencing any activity that may do one or more of the following:



- ◆ Substantially divert or obstruct the natural flow of any river, stream or lake;
- ◆ Substantially change or use any material from the bed, channel or bank of any river, stream or lake; or
- ◆ Deposit debris, waste or other materials that could pass into any river, stream or lake.

Please note that “any river, stream, or lake” includes those that are episodic (they are dry for periods of time) as well as those that are perennial (they flow year round).

## When is an LSA Agreement Required?

CDFW requires an LSA Agreement when it determines that the activity, as described in a complete LSA notification, may substantially adversely affect existing fish or wildlife resources.

An LSA Agreement includes measures necessary to protect existing fish and wildlife resources.

CDFW may suggest ways to modify your project that would eliminate or reduce harmful impacts to fish and wildlife resources.

Before issuing an LSA Agreement, CDFW must comply with the California Environmental Quality Act (CEQA).



## Episodic



## Perennial



For more information about LSA Notification, LSA Agreements, and CEQA compliance, you are encouraged to consult with CDFW staff in the region where your activity will occur.



## How Do I Notify CDFW?

The LSA notification form, notification process and instructions, and fee schedule are located on the LSA Website:

[wildlife.ca.gov/Conservation/LSA](http://wildlife.ca.gov/Conservation/LSA)

You can obtain notification materials from the following regional offices:

### Northern Region (R1)

#### Inland

601 Locust Street  
Redding, CA 96001  
(530) 225-2367

### Northern Region (R1)

#### Coastal

619 Second Street  
Eureka, CA 95501  
(707) 441-2075

### North Central Region (R2)

1701 Nimbus Road, Suite A  
Rancho Cordova, CA 95670  
(916) 358-2885

### Bay Delta Region (R3)

2825 Cordelia Rd., Ste. 100  
Fairfield, CA 94534  
(707) 428-2002

### Central Region (R4)

1234 East Shaw Avenue  
Fresno, CA 93710  
(559) 243-4593

### South Coast Region (R5)

3883 Ruffin Road  
San Diego, CA 92123  
(858) 636-3160

### Inland Deserts Region (R6)

3602 Inland Empire Blvd.  
Suite C 220  
Ontario, CA 91764  
(909) 484-0523



Smartphone scan  
for more information