

**County of Sutter
Development Services Department**

**1130 Civic Center Blvd.
Yuba City, CA 95993
Phone 530-822-7400
Fax 530-822-7109**

STATEMENT OF DETERMINATION

The “*Determination of 1-In-200-Year Floodplain For City of Yuba City Urban Level of Flood Protection Determination*” prepared by MBK Engineers (dated November 5, 2015) has been reviewed and accepted as best available information for 200-Year Flood Elevations in the Yuba City Sphere of Influence within Sutter County (See Exhibit 1). The 200-Year Flood Elevation determined by this study is hereby accepted as Locally Determined 200-Year Flood Elevation.

Beginning July 2, 2016 California State law requires that the county make Urban Level of Flood Protection (200 year flood protection) findings prior to approval of a discretionary permit for a project or a ministerial permit for a new residence that is located in an Urbanizing Area with 200-Year flood depths deeper than 3 feet within a flood hazard area mapped as either a special flood hazard area or an area of moderate hazard (X Shaded) on FEMA’s official Flood Insurance Rate Map (FIRM) for the NFIP. The adopted study determined a 200-year flood elevation of 52.4 ft (NAVD 1988) in the required locations as outlined by California State Law.

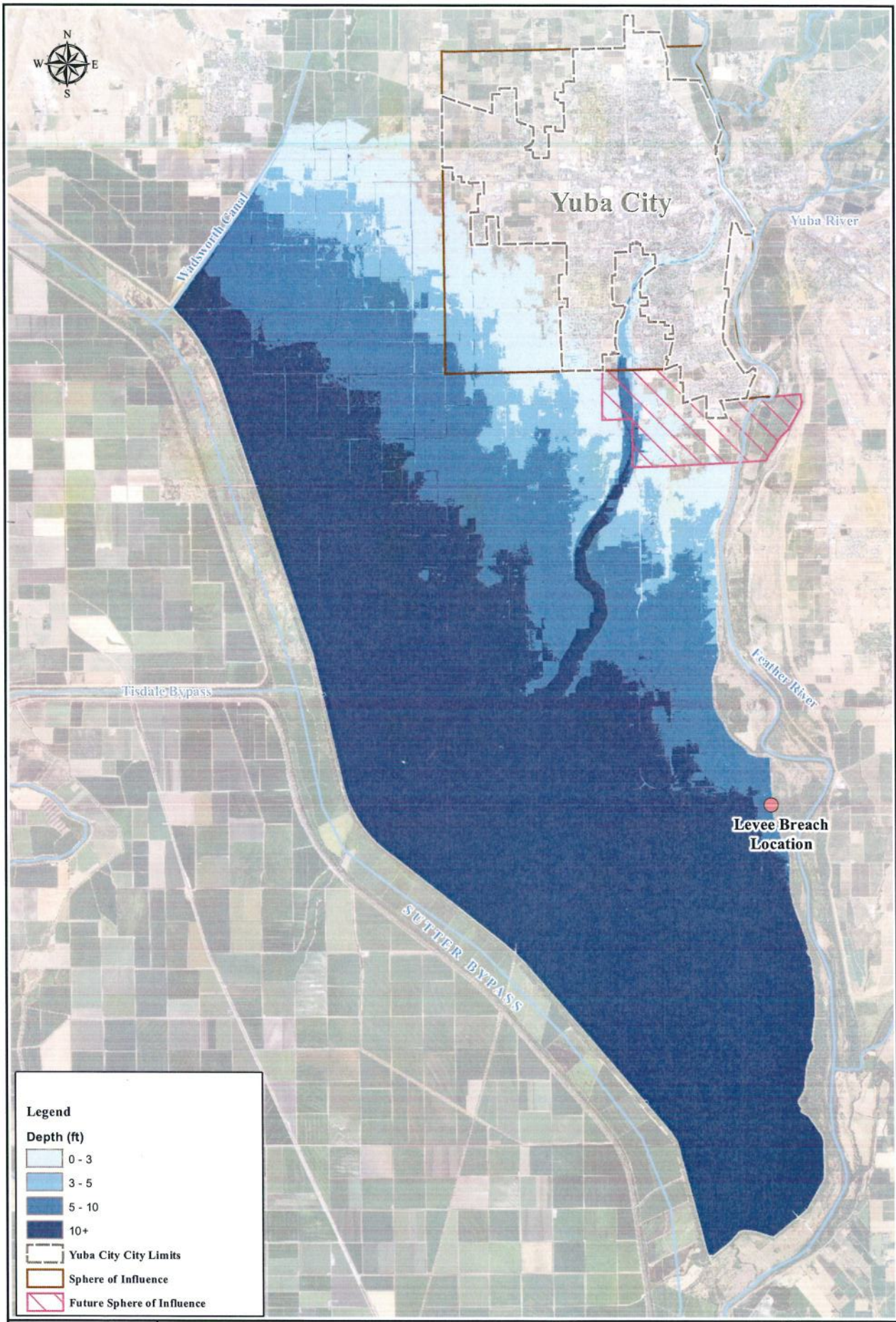
Staff is directed to utilize 52.4 ft (NAVD 1988) as the 200-year flood elevation established by this study in Yuba City Sphere of Influence within Sutter County – for Urban Level of Flood Protection findings.


Danelle Stylos
Sutter County Floodplain Administrator

7/1/2016
Date

Attachments

Exhibit 1, Determination of 1-in-200-Year Floodplain For City of Yuba City Urban Level of Flood Protection Determination, by MBK Engineers, November 5, 2015



Legend

Depth (ft)

	0 - 3
	3 - 5
	5 - 10
	10+

Yuba City City Limits

Sphere of Influence

Future Sphere of Influence

MBK ENGINEERS
 455 University Ave, Suite 100
 Sacramento, CA 95825
 Phone: 916-456-4400 Fax: 916-456-0253
 www.mbkengineers.com

City of Yuba City ULOP Determination

1-in-200 year Floodplain (Feather River Breach)

0 7,000
 1 inch = 7,000 feet

Exhibit 1

File: Flood Contours_S201_City of Yuba City_Tribal/Relief/Clipping/Analysis/figs/art_1 Exhibit_1.tif

(Scale bar length on original map equals 1 inch)