

**County of Sutter**  
**Public Works Department**

**1130 Civic Center Blvd.**  
**Yuba City, CA 95993**  
**Phone 530-822-7450**  
**Fax 530-822-7109**

## **DETERMINATION OF BASE FLOOD ELEVATION – SUTTER BASIN (SOUTH YUBA CITY)**

The detailed study prepared by Peterson-Brustad Inc. and entitled “Sutter County and Yuba City Base Flood Elevation Maps” (dated January 17, 2008) has been reviewed and accepted as best available information for Base Flood Elevations in the Yuba City Basin within Sutter County. The Base Flood Elevations (BFEs) determined by this study are hereby accepted as Locally Determined BFEs.

The Federal Emergency Management Agency (FEMA) recently processed a Physical Map Revision based on the Lower Feather River – Floodplain Mapping Study. This Physical Map Revision includes the Sutter County/Yuba City Basin (between the Sutter Bypass and the Feather River, south of Stewart Road). The updated Flood Insurance Rate Maps (FIRMs) based upon this Physical Map revision show a majority of the Yuba City Basin to be an Approximate “A” Zone for which no Base Flood Elevations are established. However, in order for the County’s Floodplain Administrator to administer building restrictions under the Sutter County – Floodplain Management Ordinance, Base Flood Elevations are needed.

FEMA regulations require the Floodplain Administrator to use the best available information to estimate Base Flood Elevations for the purpose of administering building restrictions. The Sutter County – Floodplain Management Ordinance [Chapter 1780-420(C)] states that the Floodplain Administrator shall obtain, review, and reasonably utilize any base flood elevation and floodway data available from a federal or state agency, or other source, in order to administer provisions relating to Flood Hazard Reduction.

Staff is directed to utilize the Base Flood Elevations established by these studies for Approximate “A” Zones in the Sutter County/Yuba City Basin for floodplain management purposes.



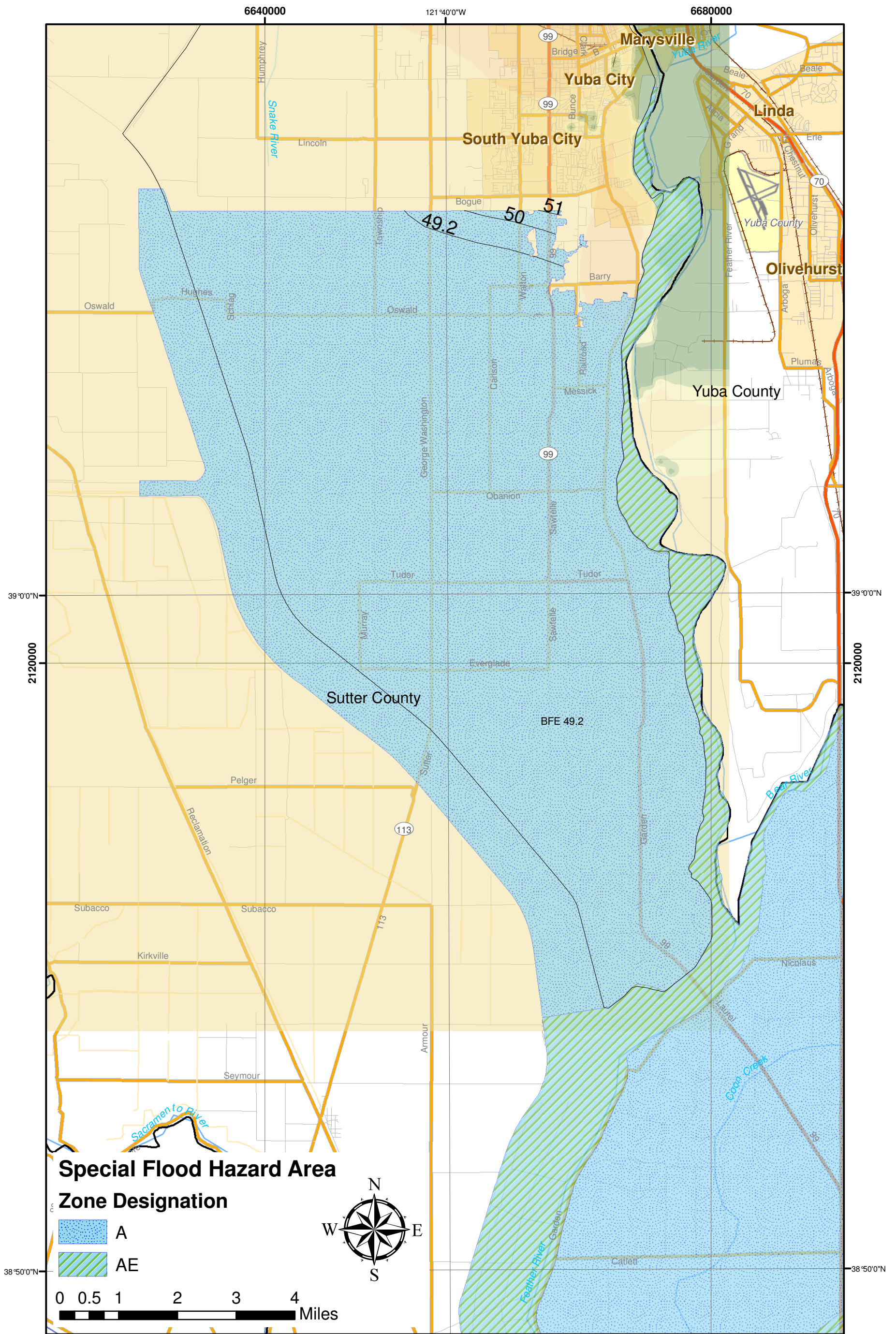
Douglas R. Gault  
Sutter County Floodplain Administrator

2/27/09  
Date

### **Attachments**

Sutter Basin Base Flood Elevation Map

# Sutter Basin Base Flood Elevation Map



Notes to Users:  
 Contour interval on this map equals 1 foot.  
 Base flood elevations shown on this map are National Geodetic Vertical Datum of 1929 (NGVD 29). These flood elevations must be compared to structure and ground elevations referenced to the same vertical datum.  
 The projection used in the preparation of this map was NAD 1983 Stateplane California Zone II.  
 To obtain current elevation, description, and/or location information for benchmarks please contact the Information Services Branch of the National Geodetic Survey at (301) 713-3242, or visit its website at <http://www.ngs.noaa.gov/>.

For information regarding the conversion between the National Geodetic Vertical Datum of 1929 and the North American Vertical Datum of 1988, visit the National Geodetic Survey website at <http://ngs.noaa.gov/> or contact the National Geodetic Survey at the following address:  
 NGS Information Services  
 NOAA, N/NGS12  
 National Geodetic Survey  
 SSMC-3, #9202  
 1315 East-West Highway  
 Silver Spring, MD 20910-3282

Boundaries of the flood elevations were interpolated from the United States Army Corps of Engineers (USACE) Updated 2006 Flo-2D Model created for the Sutter County Feasibility Study (2004).  
**PETERSON, BRUSTAD, INC.**  
 ENGINEERING, CONSULTING

**SUTTER COUNTY, CALIFORNIA**  
 February 13, 2009