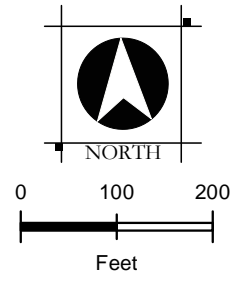


APPENDIX H

**Freeboard and Geometry Analysis –
Levee Deficiencies Strip Maps**

Levee Deficiencies Strip Maps – Yankee Slough South Levee

YANKEE SLOUGH
 LEVEE DEFICIENCIES
 RIO OSO FEASIBILITY STUDY
 RIO OSO, CA
 AUGUST, 2019



Legend

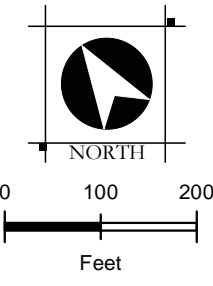
- Levee Centerline
- 300ft Cross Section
- Levee Height Deficient
- Crown Deficient - Width < 12ft
- Slope Deficiencies**
- Land Side Slope Steeper than 2:1
- Water Side Slope Steeper than 2:1
- Water Side Slope Between 2:1 and 3:1



PRELIMINARY

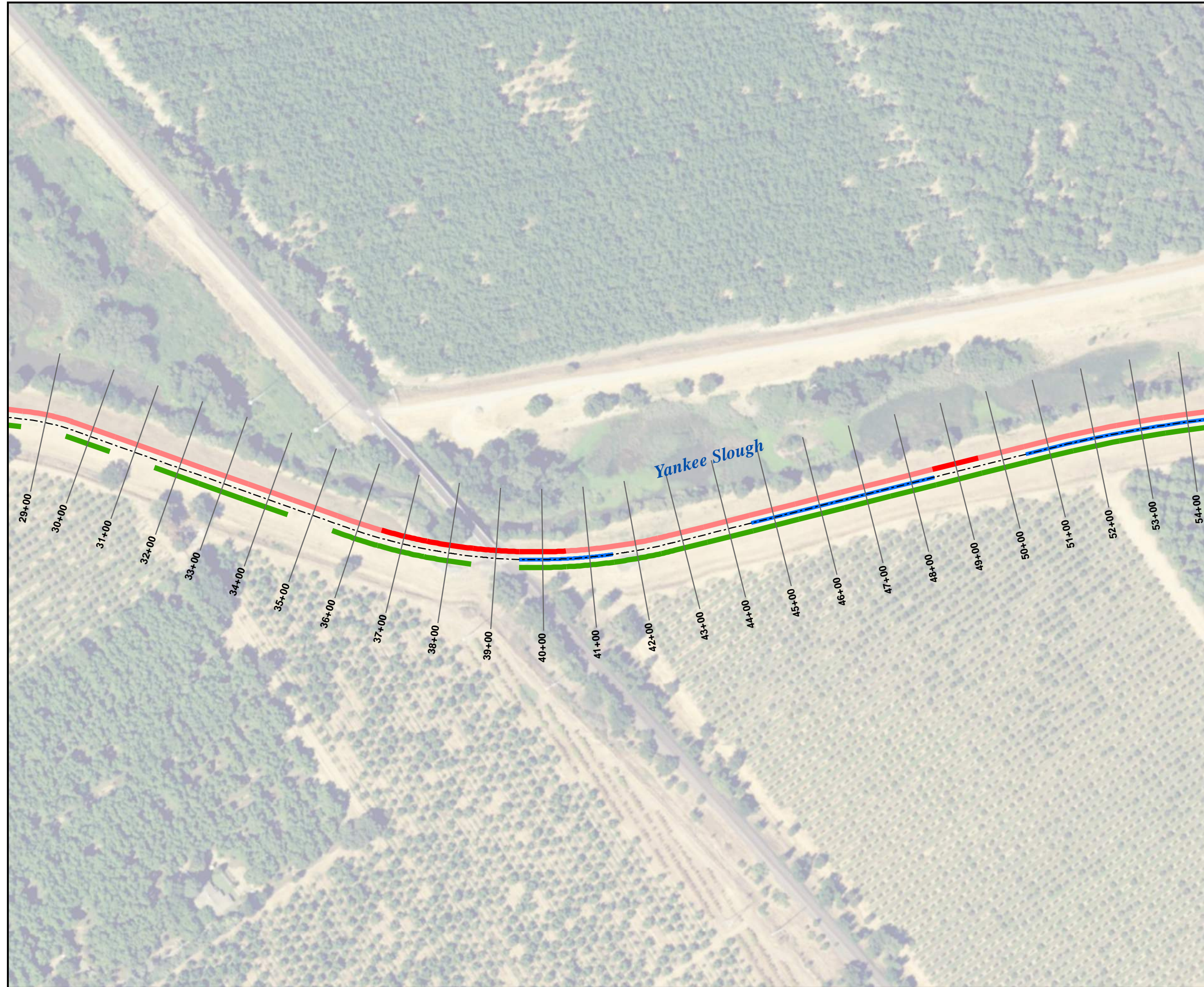


YANKEE SLOUGH
 LEVEE DEFICIENCIES
 RIO OSO FEASIBILITY STUDY
 RIO OSO, CA
 AUGUST, 2019



Legend

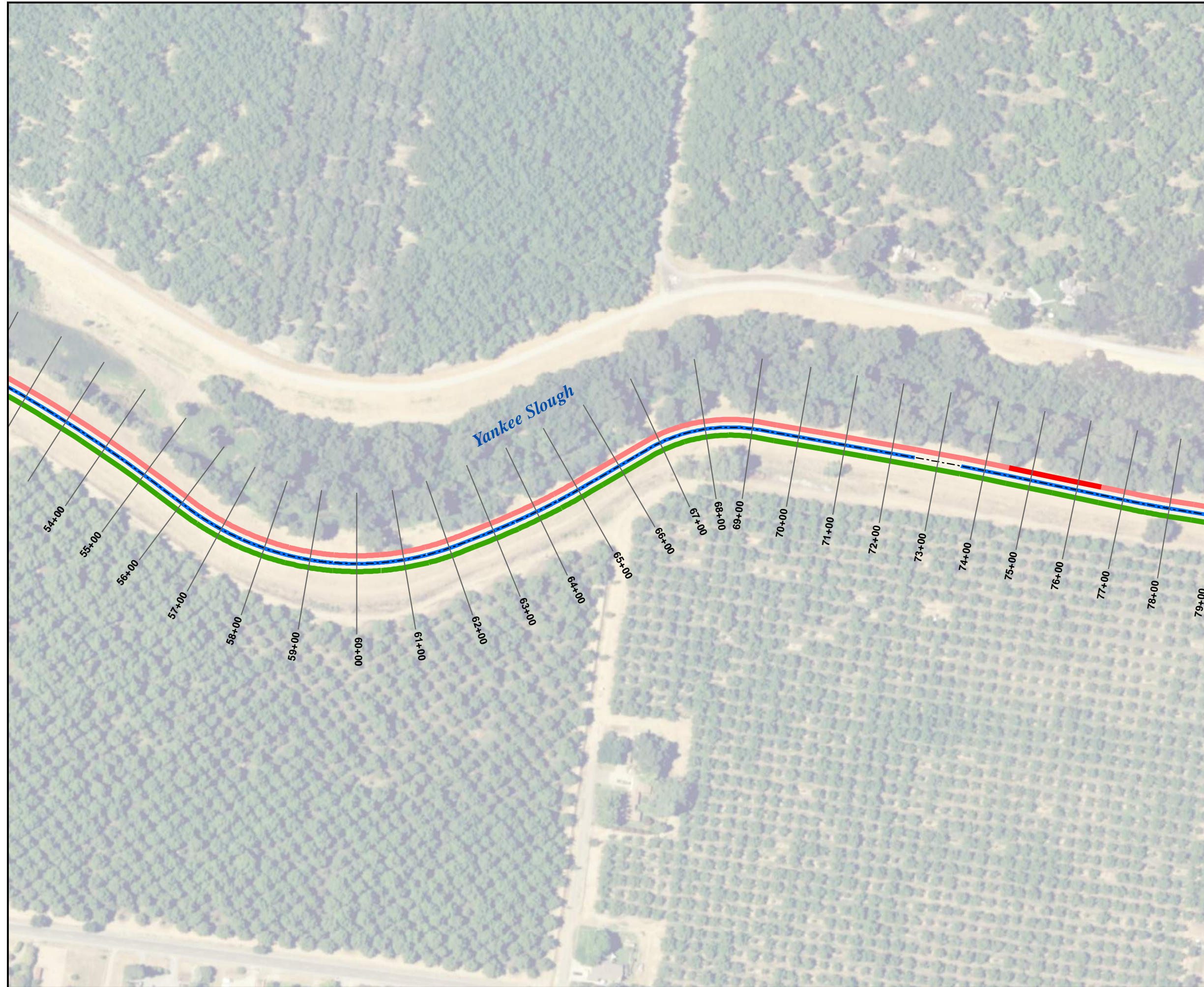
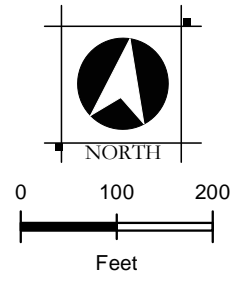
- Levee Centerline
- 300ft Cross Section
- Levee Height Deficient
- Crown Deficient - Width < 12ft
- Slope Deficiencies**
- Land Side Slope Steeper than 2:1
- Water Side Slope Steeper than 2:1
- Water Side Slope Between 2:1 and 3:1



PRELIMINARY



YANKEE SLOUGH
 LEVEE DEFICIENCIES
 RIO OSO FEASIBILITY STUDY
 RIO OSO, CA
 AUGUST, 2019



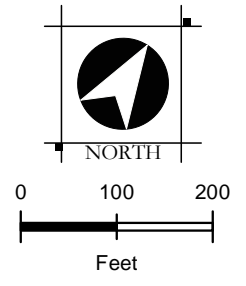
Legend

- Levee Centerline
- 300ft Cross Section
- Levee Height Deficient
- Crown Deficient - Width < 12ft
- Slope Deficiencies**
- Land Side Slope Steeper than 2:1
- Water Side Slope Steeper than 2:1
- Water Side Slope Between 2:1 and 3:1

PRELIMINARY

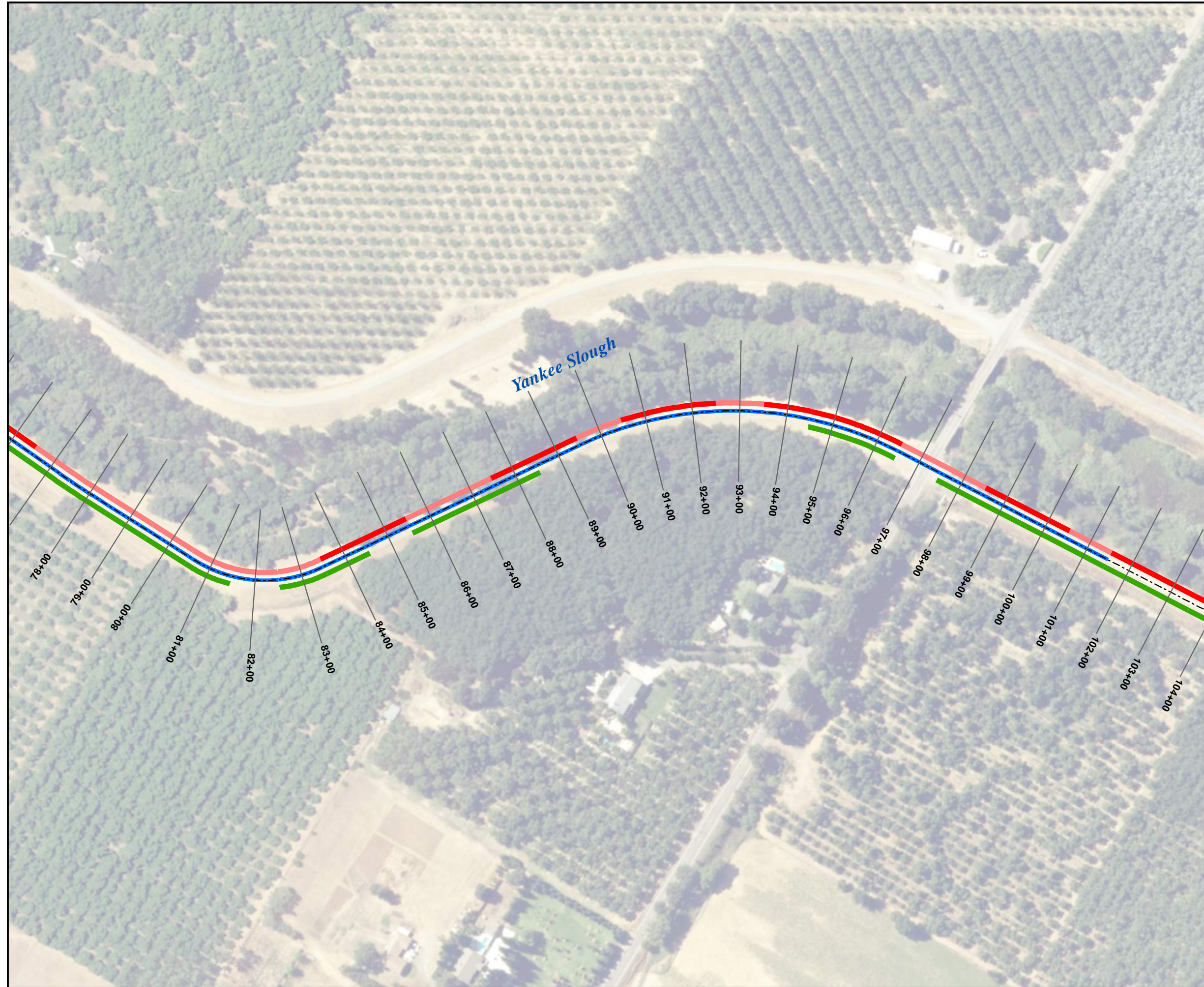


YANKEE SLOUGH
 LEVEE DEFICIENCIES
 RIO OSO FEASIBILITY STUDY
 RIO OSO, CA
 AUGUST, 2019



Legend

- Levee Centerline
- 300ft Cross Section
- Levee Height Deficient
- Crown Deficient - Width < 12ft
- Slope Deficiencies**
- Land Side Slope Steeper than 2:1
- Water Side Slope Steeper than 2:1
- Water Side Slope Between 2:1 and 3:1

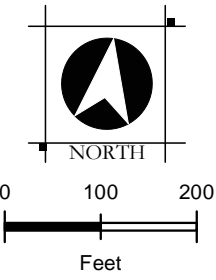


PRELIMINARY



YANKEE SLOUGH
LEVEE DEFICIENCIES
RIO OSO FEASIBILITY STUDY

RIO OSO, CA
AUGUST, 2019



Legend

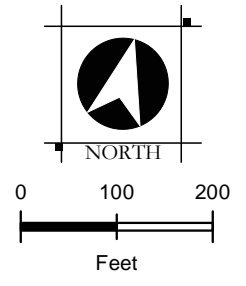
- Levee Centerline
- 300ft Cross Section
- Levee Height Deficient
- Crown Deficient - Width < 12ft
- Slope Deficiencies**
- Land Side Slope Steeper than 2:1
- Water Side Slope Steeper than 2:1
- Water Side Slope Between 2:1 and 3:1



PRELIMINARY

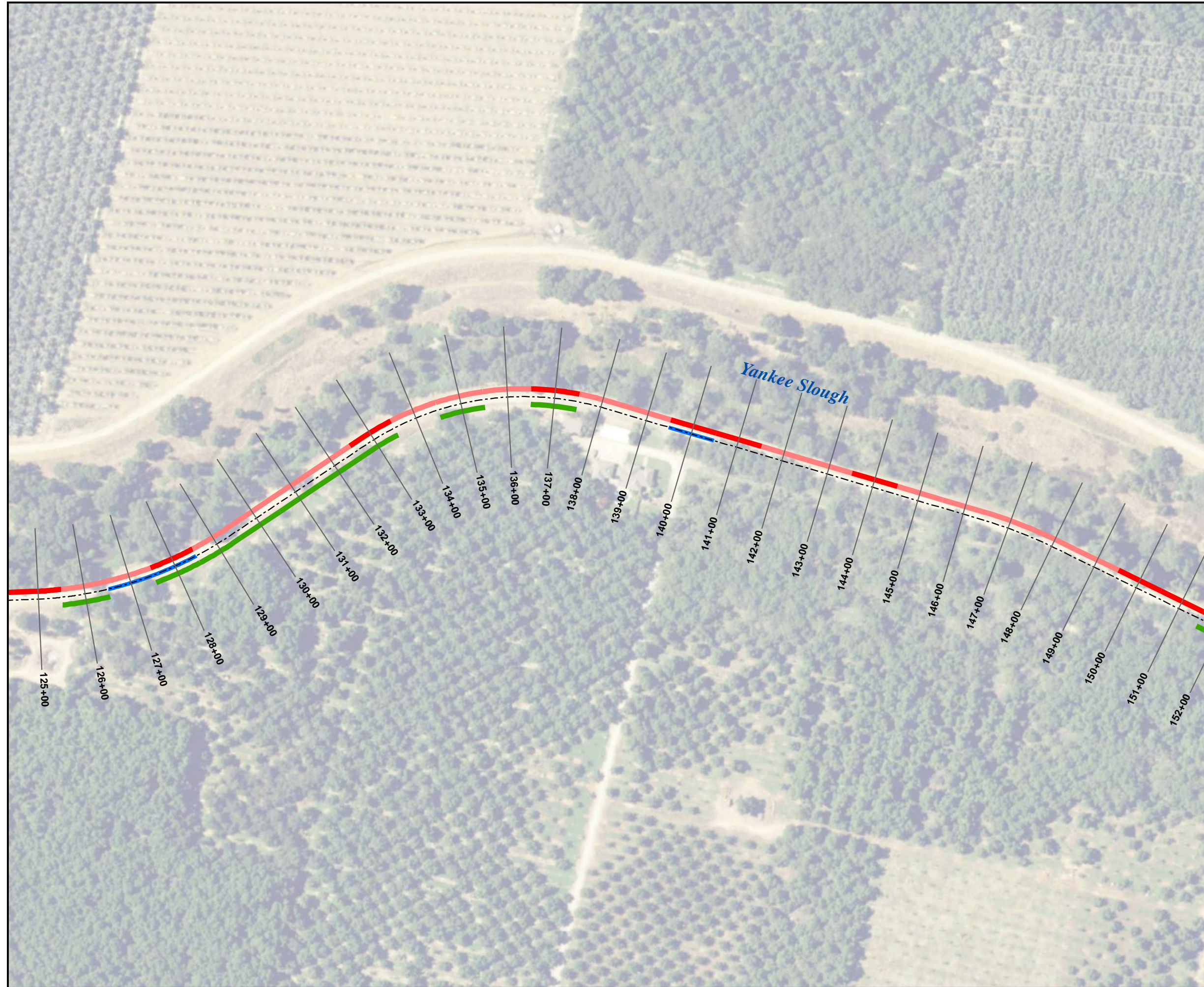


YANKEE SLOUGH
 LEVEE DEFICIENCIES
 RIO OSO FEASIBILITY STUDY
 RIO OSO, CA
 AUGUST, 2019



Legend

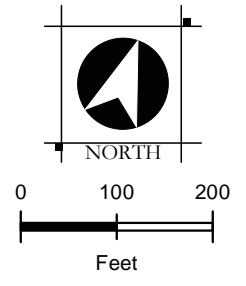
- Levee Centerline
- 300ft Cross Section
- Levee Height Deficient
- Crown Deficient - Width < 12ft
- Slope Deficiencies**
- Land Side Slope Steeper than 2:1
- Water Side Slope Steeper than 2:1
- Water Side Slope Between 2:1 and 3:1



PRELIMINARY



YANKEE SLOUGH
 LEVEE DEFICIENCIES
 RIO OSO FEASIBILITY STUDY
 RIO OSO, CA
 AUGUST, 2019



Legend

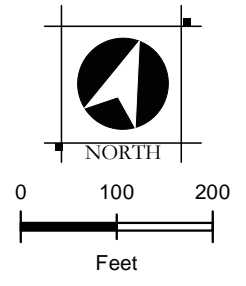
- Levee Centerline
- 300ft Cross Section
- Levee Height Deficient
- Crown Deficient - Width < 12ft
- Slope Deficiencies**
- Land Side Slope Steeper than 2:1
- Water Side Slope Steeper than 2:1
- Water Side Slope Between 2:1 and 3:1



PRELIMINARY

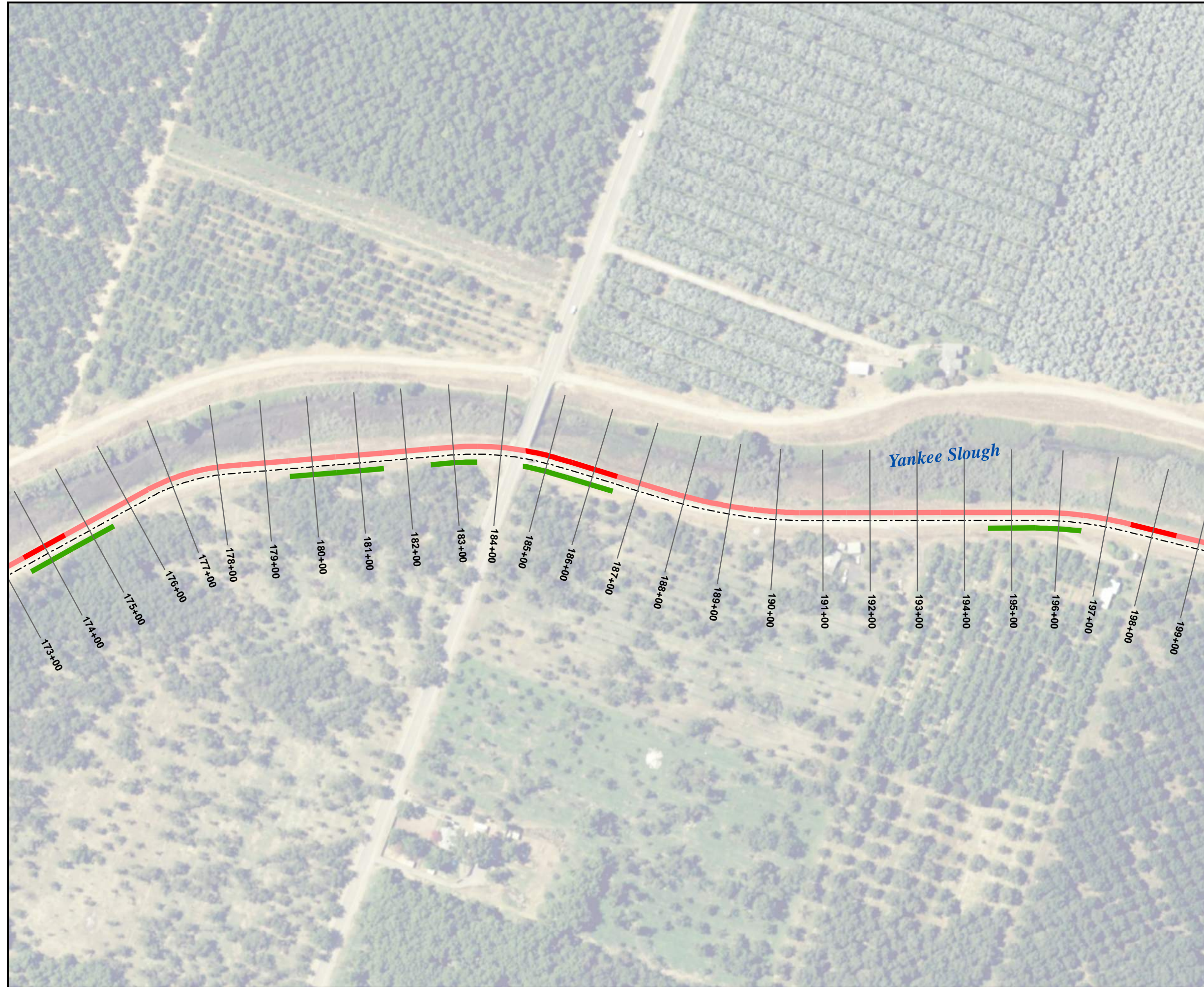


YANKEE SLOUGH
 LEVEE DEFICIENCIES
 RIO OSO FEASIBILITY STUDY
 RIO OSO, CA
 AUGUST, 2019



Legend

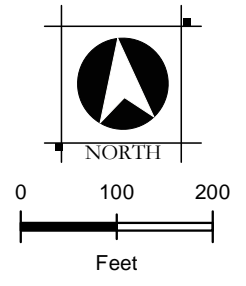
- Levee Centerline
- 300ft Cross Section
- Levee Height Deficient
- Crown Deficient - Width < 12ft
- Slope Deficiencies**
- Land Side Slope Steeper than 2:1
- Water Side Slope Steeper than 2:1
- Water Side Slope Between 2:1 and 3:1



PRELIMINARY

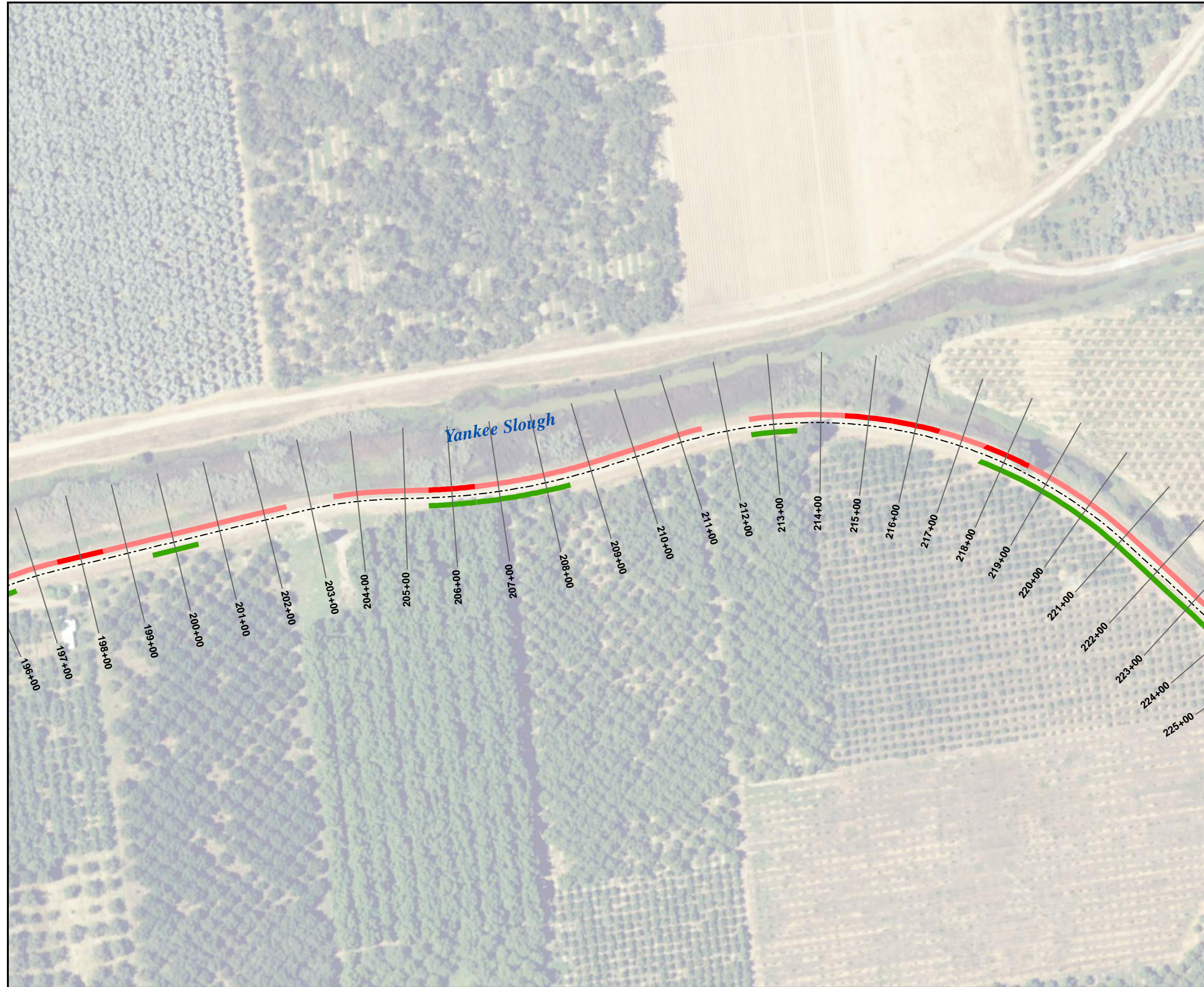


YANKEE SLOUGH
 LEVEE DEFICIENCIES
 RIO OSO FEASIBILITY STUDY
 RIO OSO, CA
 AUGUST, 2019



Legend

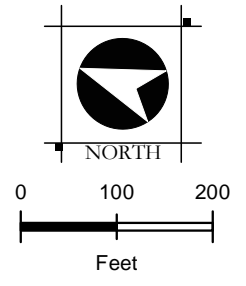
- Levee Centerline
- 300ft Cross Section
- Levee Height Deficient
- Crown Deficient - Width < 12ft
- Slope Deficiencies**
- Land Side Slope Steeper than 2:1
- Water Side Slope Steeper than 2:1
- Water Side Slope Between 2:1 and 3:1



PRELIMINARY

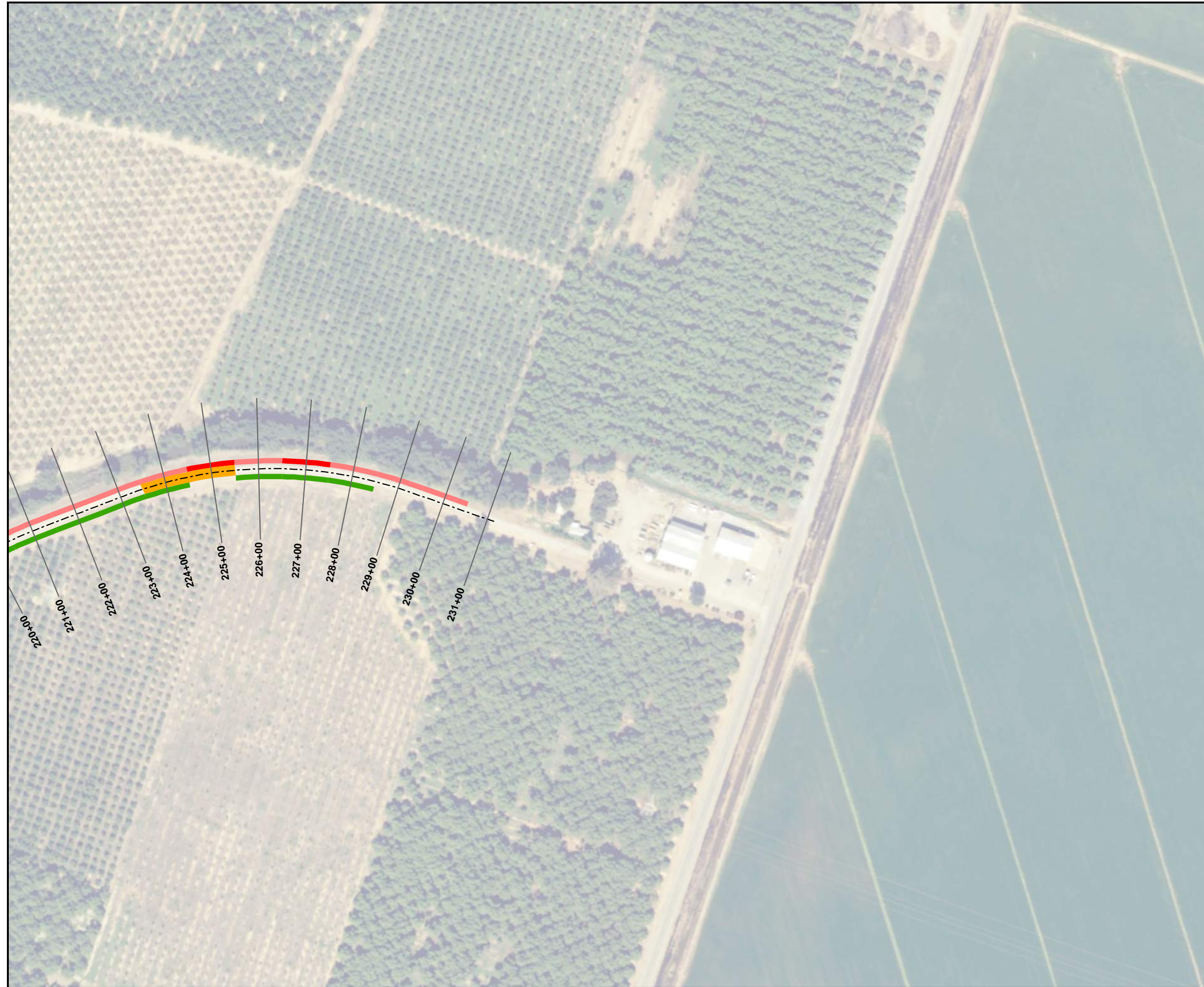


YANKEE SLOUGH
 LEVEE DEFICIENCIES
 RIO OSO FEASIBILITY STUDY
 RIO OSO, CA
 AUGUST, 2019



Legend

- Levee Centerline
- 300ft Cross Section
- Levee Height Deficient
- Crown Deficient - Width < 12ft
- Slope Deficiencies**
- Land Side Slope Steeper than 2:1
- Water Side Slope Steeper than 2:1
- Water Side Slope Between 2:1 and 3:1

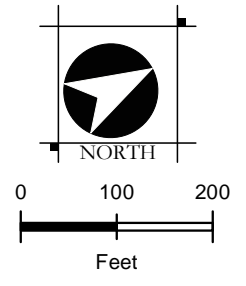


PRELIMINARY



Levee Deficiencies Strip Maps – Bear River East Levee

BEAR RIVER
 LEVEE DEFICIENCIES
 RIO OSO FEASIBILITY STUDY
 RIO OSO, CA
 AUGUST, 2019

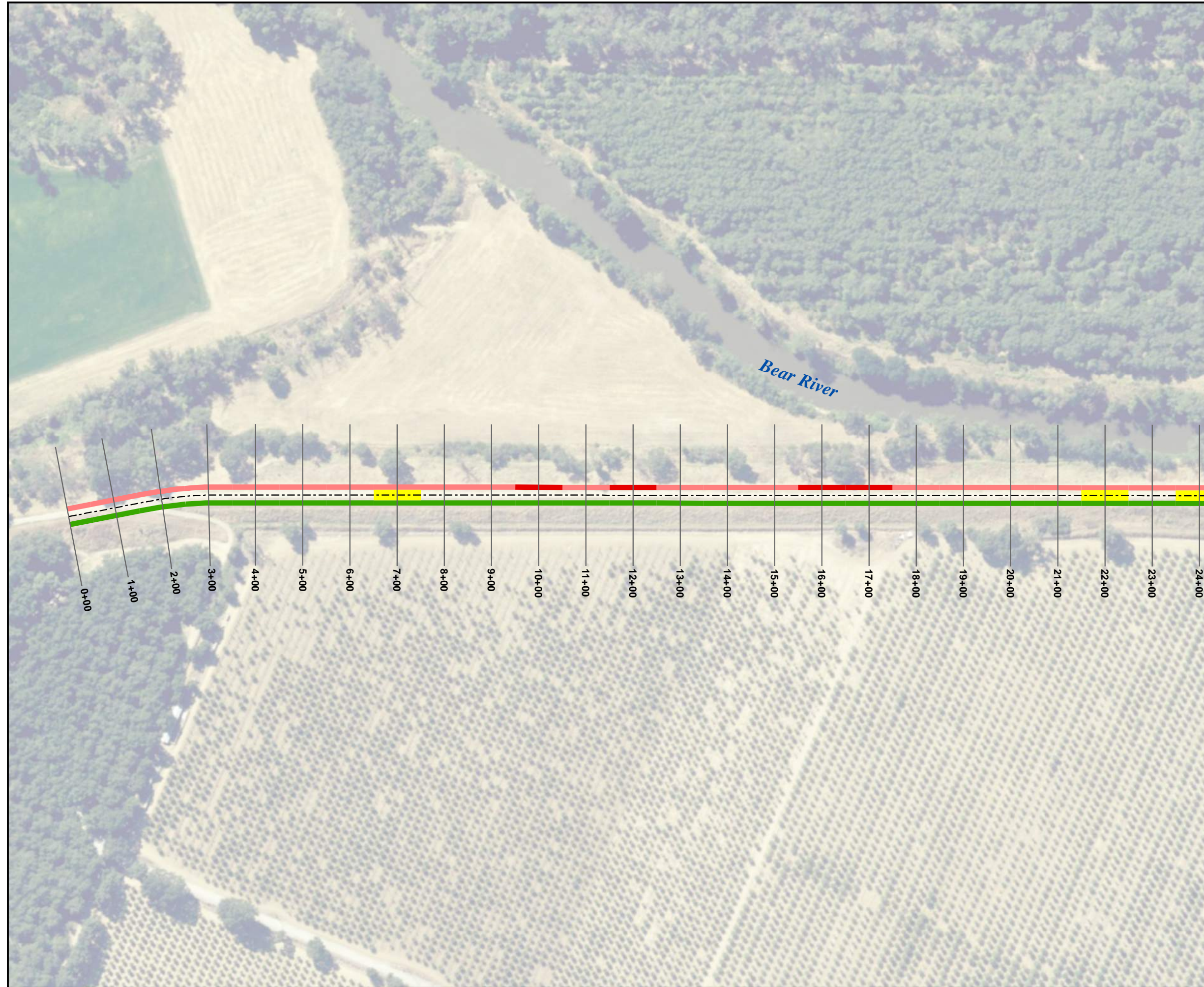


Legend

- Levee Centerline
- 300ft Cross Section
- Levee Height Deficient
- Crown Deficient - Width < 20ft
- Crown Deficient - Width < 15ft

Slope Deficiencies

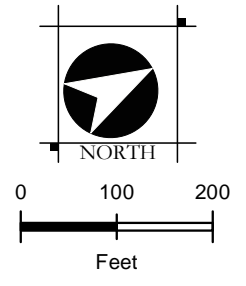
- Land Side Slope Steeper than 2:1
- Water Side Slope Steeper than 2:1
- Water Side Slope Between 2:1 and 3:1



PRELIMINARY

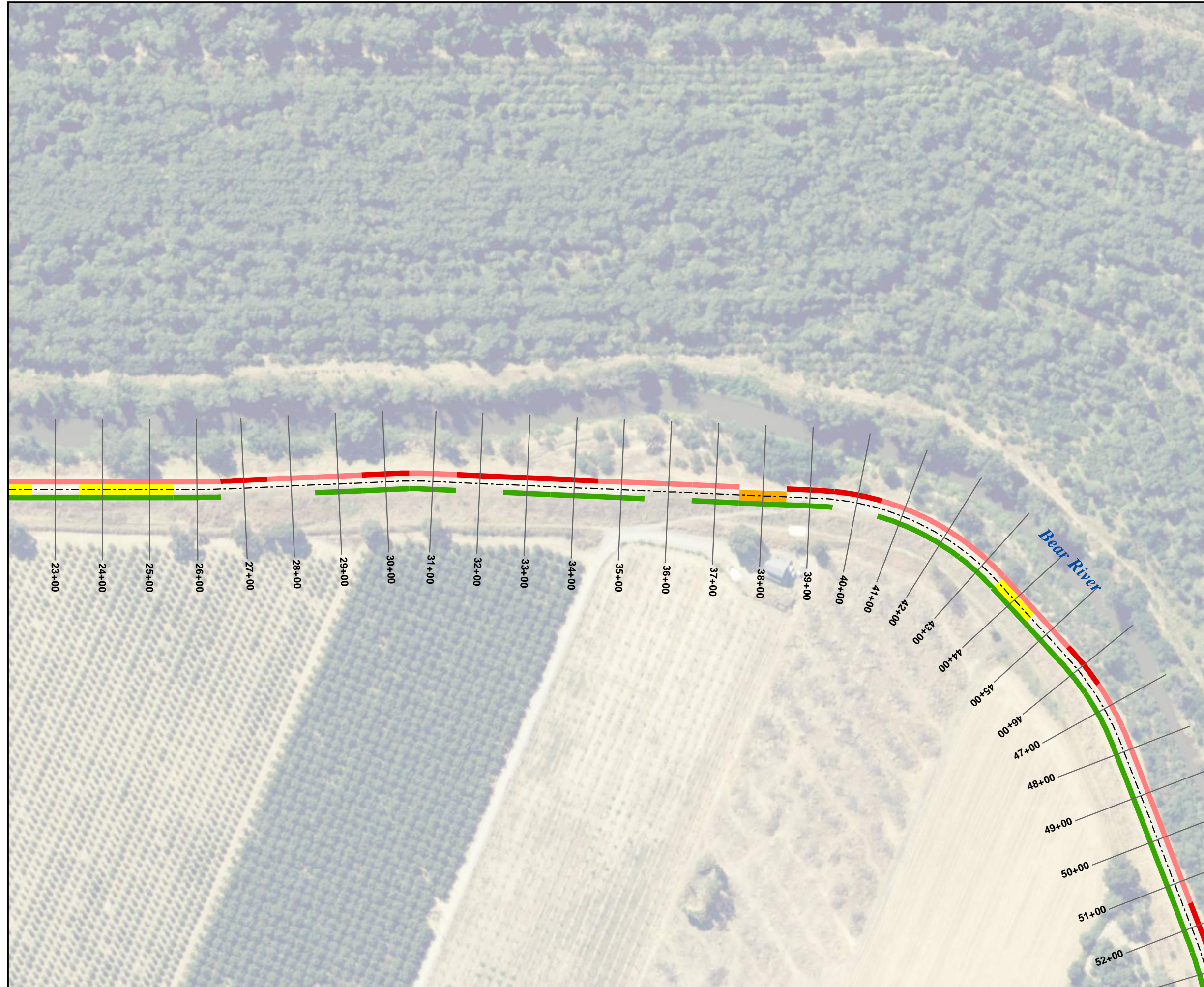


BEAR RIVER
 LEVEE DEFICIENCIES
 RIO OSO FEASIBILITY STUDY
 RIO OSO, CA
 AUGUST, 2019



Legend

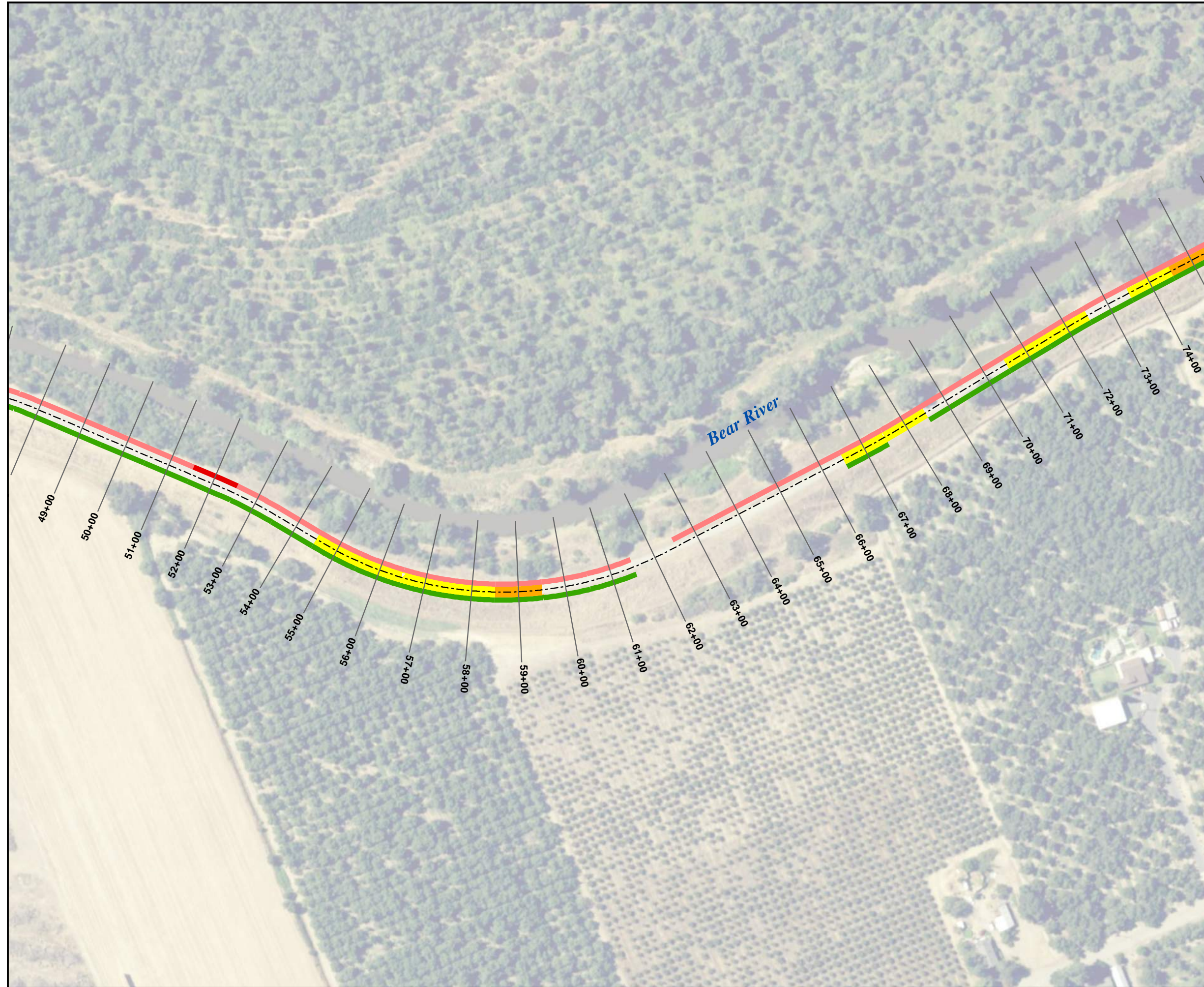
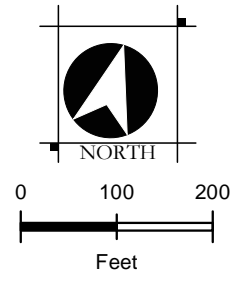
- Levee Centerline
- 300ft Cross Section
- Levee Height Deficient
- Crown Deficient - Width < 20ft
- Crown Deficient - Width < 15ft
- Slope Deficiencies**
- Land Side Slope Steeper than 2:1
- Water Side Slope Steeper than 2:1
- Water Side Slope Between 2:1 and 3:1



PRELIMINARY



BEAR RIVER
 LEVEE DEFICIENCIES
 RIO OSO FEASIBILITY STUDY
 RIO OSO, CA
 AUGUST, 2019



Legend

- Levee Centerline
- 300ft Cross Section
- Levee Height Deficient
- Crown Deficient - Width < 20ft
- Crown Deficient - Width < 15ft

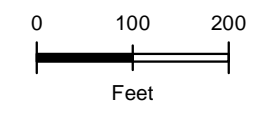
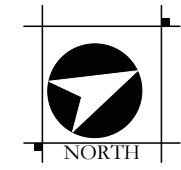
Slope Deficiencies

- Land Side Slope Steeper than 2:1
- Water Side Slope Steeper than 2:1
- Water Side Slope Between 2:1 and 3:1

PRELIMINARY



BEAR RIVER
LEVEE DEFICIENCIES
RIO OSO FEASIBILITY STUDY
RIO OSO, CA
AUGUST, 2019

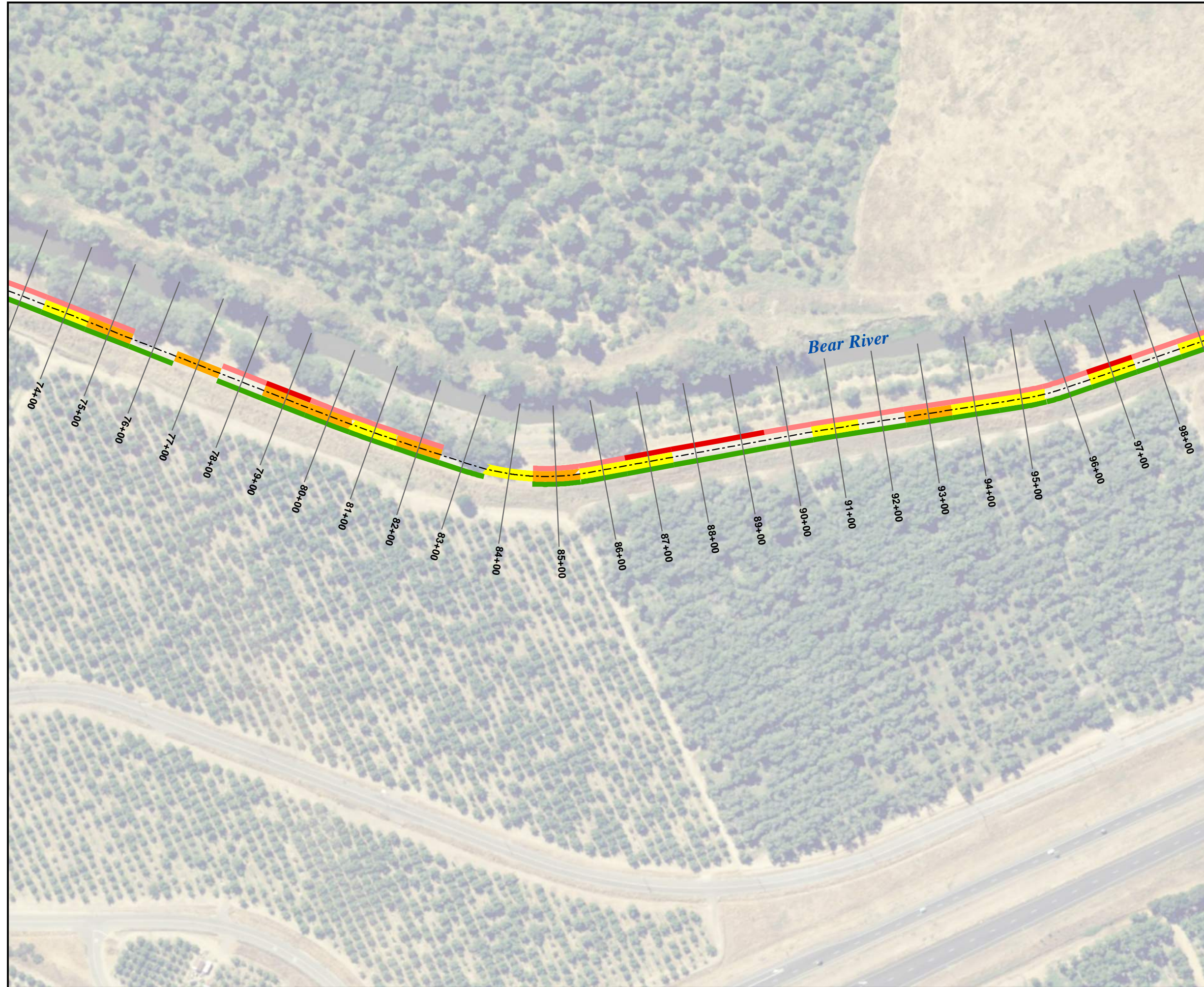


Legend

- Levee Centerline
- 300ft Cross Section
- Levee Height Deficient
- Crown Deficient - Width < 20ft
- Crown Deficient - Width < 15ft

Slope Deficiencies

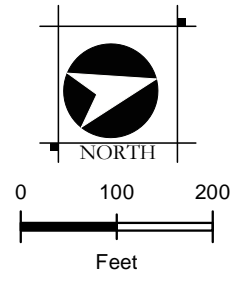
- Land Side Slope Steeper than 2:1
- Water Side Slope Steeper than 2:1
- Water Side Slope Between 2:1 and 3:1



PRELIMINARY



BEAR RIVER
 LEVEE DEFICIENCIES
 RIO OSO FEASIBILITY STUDY
 RIO OSO, CA
 AUGUST, 2019



Legend

- Levee Centerline
- 300ft Cross Section
- Levee Height Deficient
- Crown Deficient - Width < 20ft
- Crown Deficient - Width < 15ft

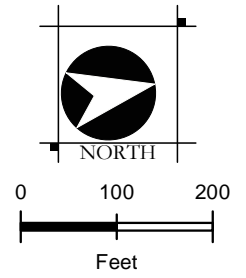
Slope Deficiencies

- Land Side Slope Steeper than 2:1
- Water Side Slope Steeper than 2:1
- Water Side Slope Between 2:1 and 3:1

PRELIMINARY



BEAR RIVER
LEVEE DEFICIENCIES
RIO OSO FEASIBILITY STUDY
RIO OSO, CA
AUGUST, 2019



Legend

- Levee Centerline
- 300ft Cross Section
- Levee Height Deficient
- Crown Deficient - Width < 20ft
- Crown Deficient - Width < 15ft
- Slope Deficiencies**
- Land Side Slope Steeper than 2:1
- Water Side Slope Steeper than 2:1
- Water Side Slope Between 2:1 and 3:1



PRELIMINARY

